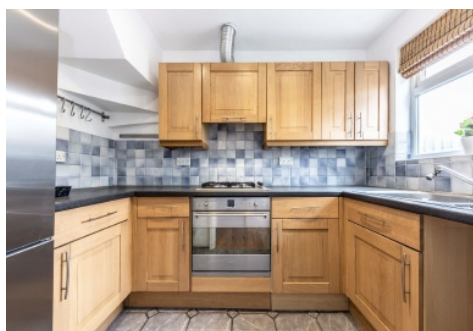
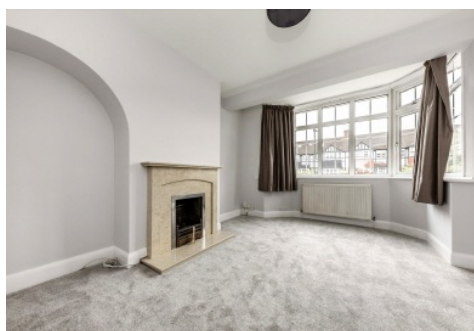


SNELLERS

ESTATE AGENTS



Devon Avenue, TW2

£695,000

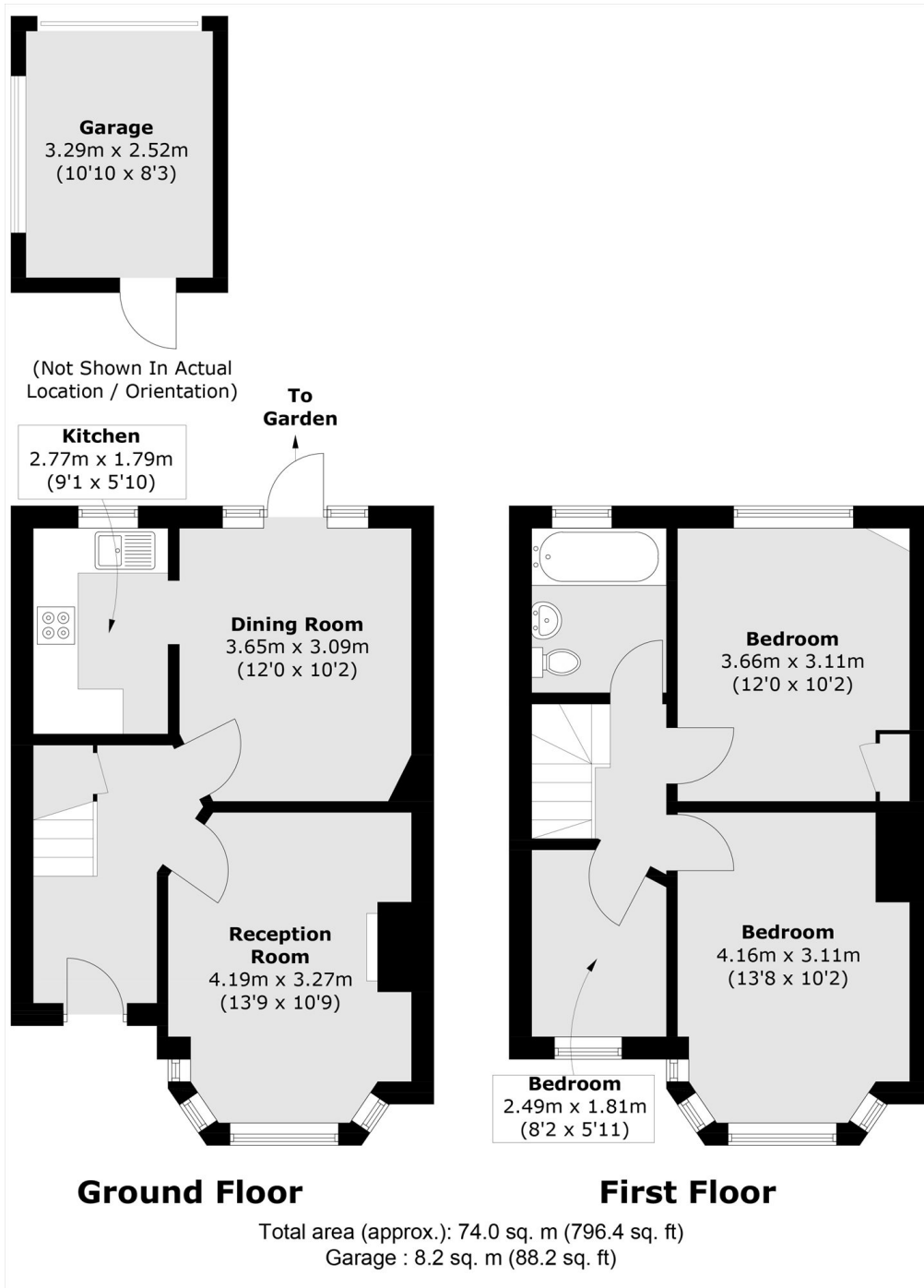
This well presented home offers bright and well-proportioned living throughout with no onward chain and potential to extend in to the loft and to the rear (STPP). The accommodation includes a welcoming front living room and a spacious semi-open plan kitchen/dining room with direct access to a generous patio garden. Upstairs, the home provides two spacious double bedrooms, a further single bedroom and a modern family bathroom.

Devon Avenue is a desirable residential road in the popular 'Counties' development, within close proximity to Twickenham Green and within an excellent school catchment.

- Off Street Parking • Great School Catchment • No Onward Chain •
- Three Bedrooms • Two Reception Rooms • Potential to Extend (STPP) •

SNELLERS

ESTATE AGENTS



Snellers Twickenham Sales
64-66 Heath Road
Twickenham
TW1 4BX
020 8892 5555
twickenhamsales@snellers.co.uk

Energy Rating: C We aim to make our particulars both accurate and reliable. However they are not guaranteed; nor do they form part of an offer or contract. If you require clarification on any points then please contact us, especially if you're traveling some distance to view. Please note that appliances and heating systems have not been tested and therefore no warranties can be given as to their good working order