

# SNELLERS

ESTATE AGENTS



## New Road, TW3

£1,650 PCM

This quaint Victorian cottage is ideal for a couple or small family wanting a homely property with character and charm. The property has been recently renovated and offers two bedrooms, a through reception room with feature fireplace, kitchen, bathroom and a courtyard garden.

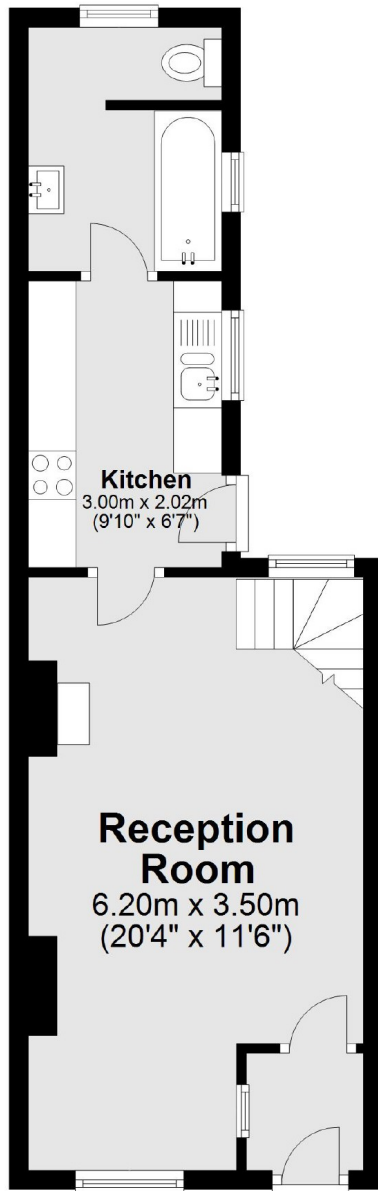
New Road is the perfect location with everything you could want on your doorstep, with Hounslow Station offering access into London Waterloo, the Treaty centre offering plenty of retail shops, restaurants, cinema, pubs and a number of popular schools nearby.

- Recently Renovated • Victorian Cottage • Two Bedrooms •
- Period Features • Courtyard Garden • 0.2m to Station •

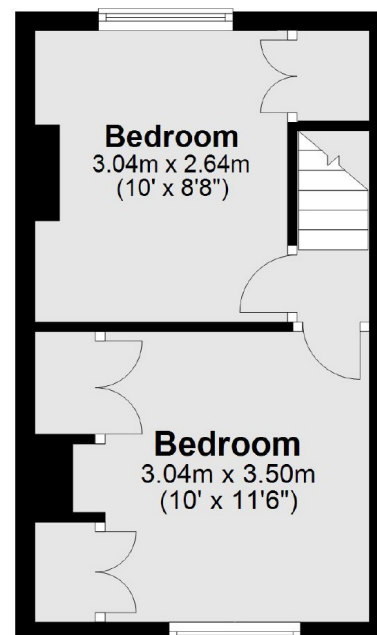
# SNELLERS

ESTATE AGENTS

## Ground Floor



## First Floor



Total area: approx. 54.9 sq. metres (591.3 sq. feet)

Snellers Twickenham Lettings  
64-66 Heath Road  
Twickenham  
TW1 4BX  
020 8892 5678  
[twickenhamlettings@snellers.co.uk](mailto:twickenhamlettings@snellers.co.uk)

Energy Rating: D We aim to make our particulars both accurate and reliable. However they are not guaranteed; nor do they form part of an offer or contract. If you require clarification on any points then please contact us, especially if you're traveling some distance to view. Please note that appliances and heating systems have not been tested and therefore no warranties can be given as to their good working order