

SNELLERS

ESTATE AGENTS



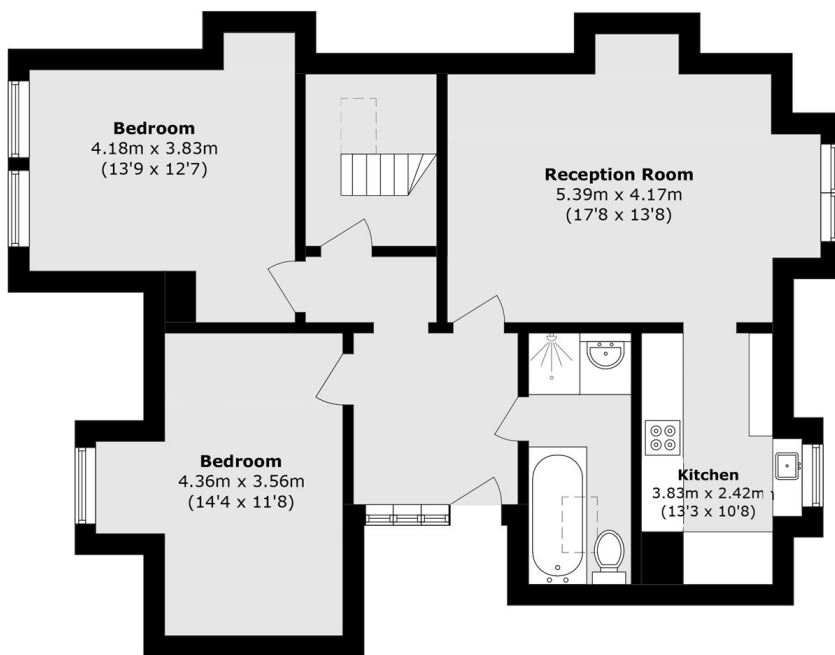
Waldegrave Gardens, TW1

£650,000

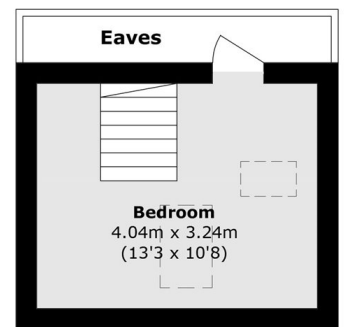
A large and beautifully presented top floor apartment set within a handsome period building, benefitting from three bedrooms, a communal South West facing garden and a share of the freehold. Offered to the market with no onward chain.

Waldegrave Gardens is a beautiful, tree-lined road within the Strawberry Hill conservation area, moments from the River Thames. The location enjoys excellent transport links, with nearby station providing direct services into Central London. Neighbouring Twickenham and Teddington both offer vibrant high streets, while the picturesque Richmond Riverside and Park are just 10 minutes away. Superbly located near Strawberry Hill House, St Mary's University and many of the areas fantastic state and private schools.

- Three Double Bedrooms • Communal Garden • Share Of Freehold •
- Premium Location • Period Property • End Of Chain •



Second Floor



Third Floor

Total area (approx.): 86.5 sq. m (931.0 sq. ft)

Snellers Twickenham Sales
64-66 Heath Road
Twickenham
TW1 4BX
020 8892 5555
twickenhamsales@snellers.co.uk

Energy Rating: D We aim to make our particulars both accurate and reliable. However they are not guaranteed; nor do they form part of an offer or contract. If you require clarification on any points then please contact us, especially if you're traveling some distance to view. Please note that appliances and heating systems have not been tested and therefore no warranties can be given as to their good working order