



Strawberry Vale, TW1

£4,500 PCM

A beautifully presented, three double bedroom apartment set within an award-winning development.



A beautifully presented, three double bedroom apartment set within an exclusive, award-winning contemporary development comprising just eight bespoke residences.

Perfectly positioned to take full advantage of breathtaking views over the River Thames, the property combines modern architectural design with a serene riverside setting. Further benefits include allocated private parking, high-quality finishes throughout and access to extensive shared outdoor space.

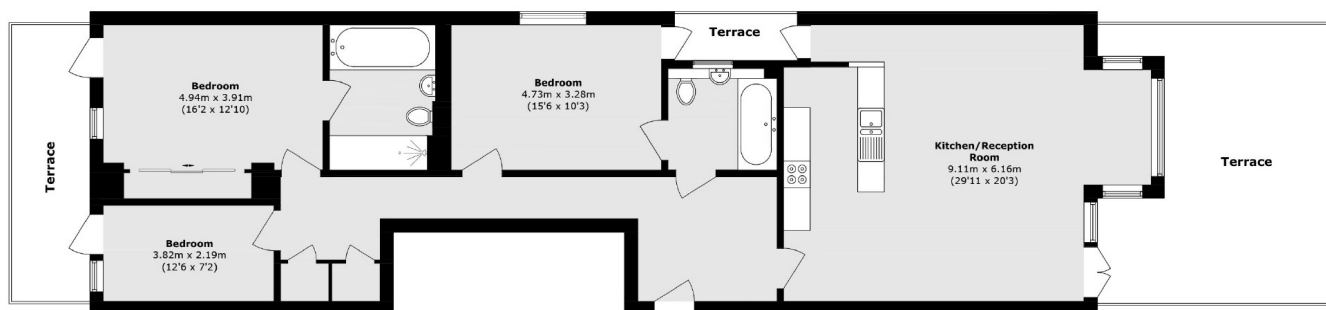
A rare opportunity in the heart of Strawberry Vale, Twickenham. Nestled within the highly desirable postcode, this location offers a truly exceptional residential environment, combining tranquil riverside living with excellent access to amenities, transport and green open spaces.

- Beautifully Presented • Three Bedrooms • Garden •
- Secure and Underground Parking • Strawberry Vale •



SNELLERS

ESTATE AGENTS



Total area (approx.): 127.0 sq. m (1367.0 sq. ft)

Terrace area (approx.): 43.1 sq. m (463.9 sq. ft)

Snellers Twickenham Lettings
64-66 Heath Road
Twickenham
TW1 4BX
020 8892 5678
twickenhamlettings@snellers.co.uk

Energy Rating: C We aim to make our particulars both accurate and reliable. However they are not guaranteed; nor do they form part of an offer or contract. If you require clarification on any points then please contact us, especially if you're traveling some distance to view. Please note that appliances and heating systems have not been tested and therefore no warranties can be given as to their good working order