

# SNELLERS

ESTATE AGENTS

---



## The Green, TW2

£1,575,000

A truly beautiful period family home in this prime and sought after location, with enviable views overlooking Twickenham Green, a wealth of period features and charm and nearly 2000 sq ft of immaculate accommodation.





This interior is beautifully presented throughout and has the perfect blend of modern and period features.

On the ground floor, there are no less than three reception rooms and a large 'Mark Wilkinson' kitchen / dining room, making the perfect entertaining space, with a central island, granite worktops and beautiful wooden beams, leading onto a pretty garden with a large summer house at the rear.

Upstairs there are four bedrooms, the master having an en-suite bathroom and a balcony, and a large family bathroom.

Twickenham Green is surrounded by plenty of local pubs, bars and restaurants. Strawberry Hill Station which has direct links to London Waterloo is just 0.5 miles away with Twickenham Station just under a mile. There are also plenty of excellent primary and secondary schools nearby.

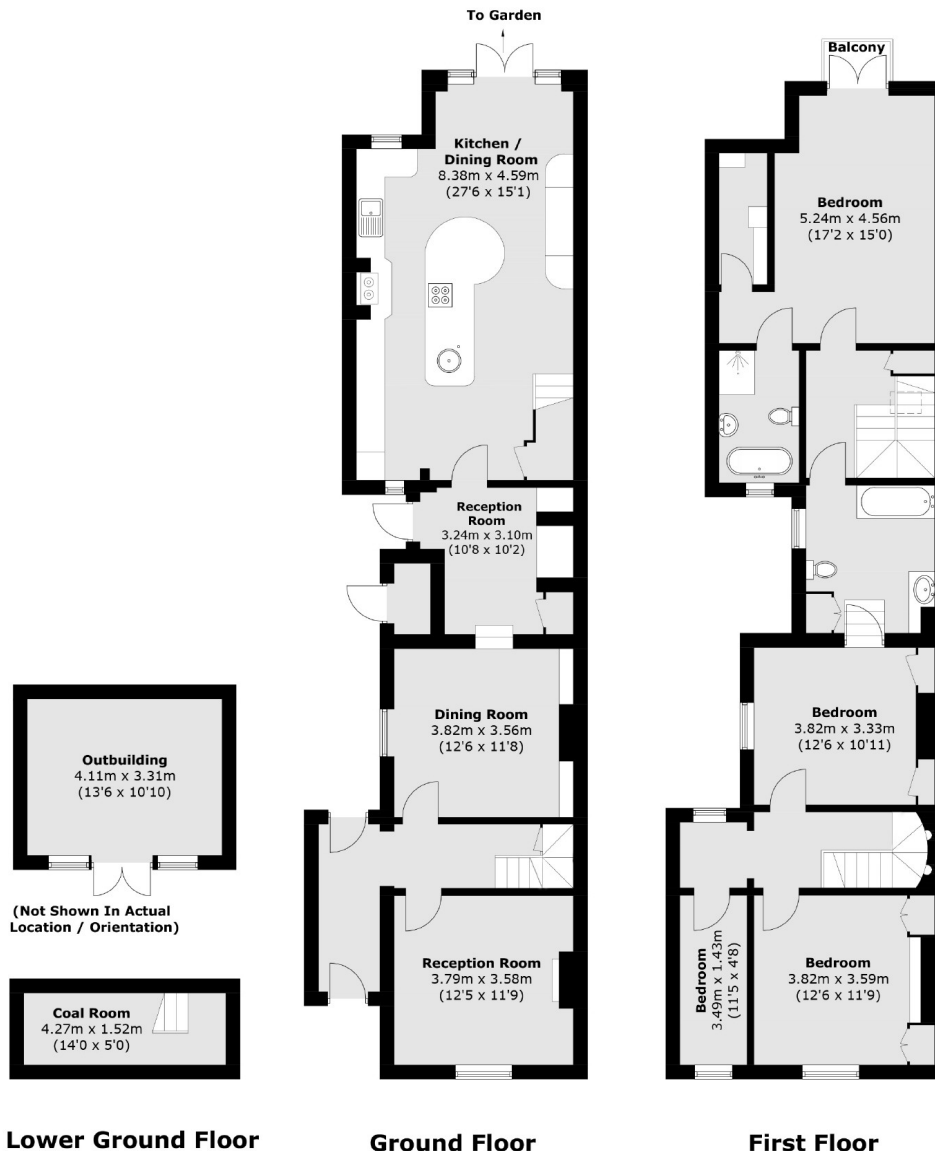
- Immaculately Presented • Semi Detached • No Onward Chain •
- Four Bedrooms • Two Bathrooms • Summer House •





# SNELLERS

ESTATE AGENTS



Total area (approx.): 179.5 sq. m (1,932.0 sq. ft)  
 Outbuildings: 15.1 sq. m (162.5 sq. ft)  
 Balcony Area: 1.2 sq. m (12.9 sq. ft)

Snellers Twickenham Sales  
 64-66 Heath Road  
 Twickenham  
 TW1 4BX  
 020 8892 5555  
[twickenhamsales@snellers.co.uk](mailto:twickenhamsales@snellers.co.uk)

Energy Rating: D We aim to make our particulars both accurate and reliable. However they are not guaranteed; nor do they form part of an offer or contract. If you require clarification on any points then please contact us, especially if you're traveling some distance to view. Please note that appliances and heating systems have not been tested and therefore no warranties can be given as to their good working order