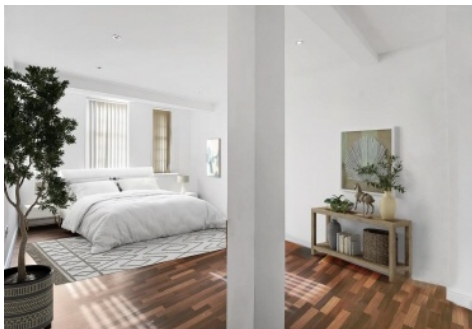


SNELLERS

ESTATE AGENTS



King Street, TW1

£1,995 PCM

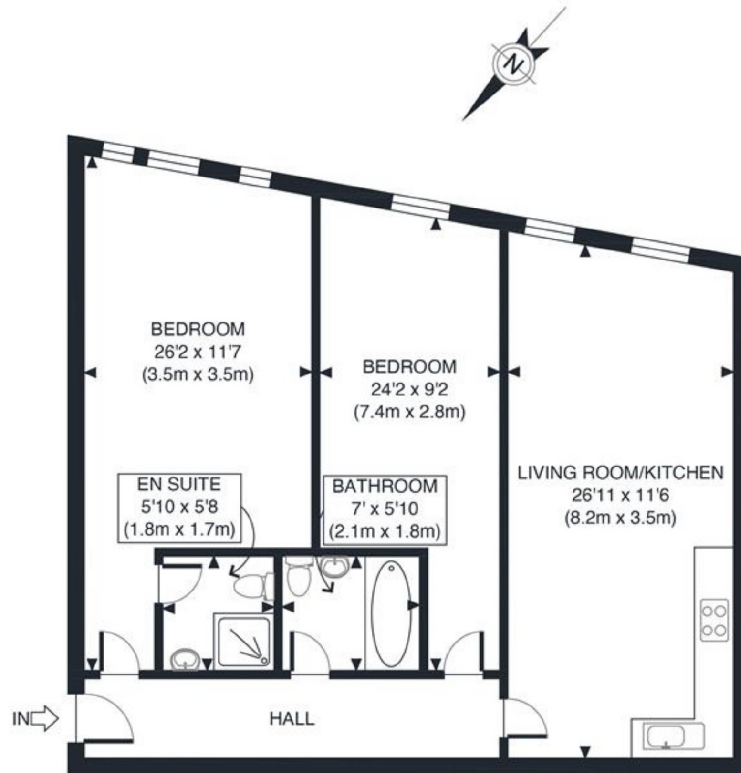
This overly large apartment has plenty of charm and is located close to Twickenham Station. The flat has a large reception room, eat-in kitchen, two large double bedrooms and with both a large walk-in shower and bath. The flat comes with a communal indoor bike storage.

King Street is located opposite Church Street and amongst all the cafe's, restaurants, shops and bars of Twickenham. Twickenham station is nearby with direct links into central London.


- Large Flat • Two Double Bedrooms • Two Bathrooms •
- Bike Storage • Modern Finish • Excellent Transport Links •

SNELLERS

ESTATE AGENTS



FIRST FLOOR
GROSS INTERNAL
FLOOR AREA 921 SQ FT

APPROX. GROSS INTERNAL FLOOR AREA 921 SQ FT / 86 SQM	Kings St
Disclaimer: Floor plan measurements are approximate and are for illustrative purposes only. While we do not doubt the floor plan accuracy and completeness, you or your advisors should conduct a careful, independent investigation of the property in respect of monetary valuation	date 14/09/23
	photoplan 

Snellers Twickenham Lettings
64-66 Heath Road
Twickenham
TW1 4BX
020 8892 5678
twickenhamlettings@snellers.co.uk

Energy Rating: C We aim to make our particulars both accurate and reliable. However they are not guaranteed; nor do they form part of an offer or contract. If you require clarification on any points then please contact us, especially if you're traveling some distance to view. Please note that appliances and heating systems have not been tested and therefore no warranties can be given as to their good working order