

SNELLERS

ESTATE AGENTS



Wiltshire Gardens, TW2

£850,000

This stunning four bedroom family home is perfectly positioned in the ever-popular Counties area, offering the ideal balance of space, style and location. Thoughtfully extended and beautifully maintained, it's a home that's ready to move into and enjoy from day one. Families will love the proximity to highly regarded schools including Waldegrave School and Turing House, along with a great selection of primary schools nearby. Commuters are equally well catered for, with Whitton Station just over half a mile away, providing direct links into London Waterloo.



Step inside and you'll find a layout that really works for modern family life. The ground floor features a bright front reception room that's semi open-plan to the dining area, a lovely flow that continues into the contemporary kitchen, complete with breakfast bar. From here, double doors lead out to a generous rear garden with rear access, a brilliant space for entertaining, playing, or simply unwinding. A useful downstairs WC adds extra convenience.

Up on the first floor, there are two double bedrooms, one with integrated storage, and a good-sized single bedroom. A stylish family bathroom completes this floor. The top floor is dedicated to a spacious and light-filled master bedroom with built-in wardrobes and a modern en suite shower room, your very own retreat at the top of the house.

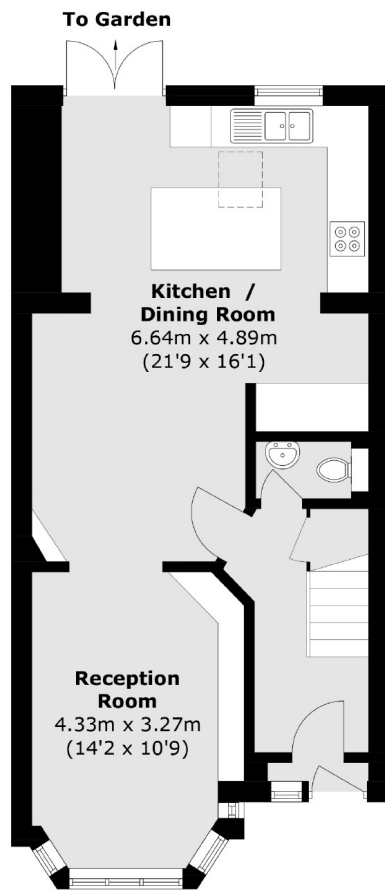
As for the location, it couldn't be better. You're just 0.6 miles from Whitton Station and within easy reach of several bus routes, offering excellent transport connections. The beautiful Kneller Gardens is only 0.3 miles away, providing open green space, a playground, tennis courts and riverside walks, perfect for families and nature lovers alike.

- Four Bedrooms • Two Bathrooms • Excellent Schools Nearby •
- Fantastic Transport Links • Beautifully Presented • Rear Access •

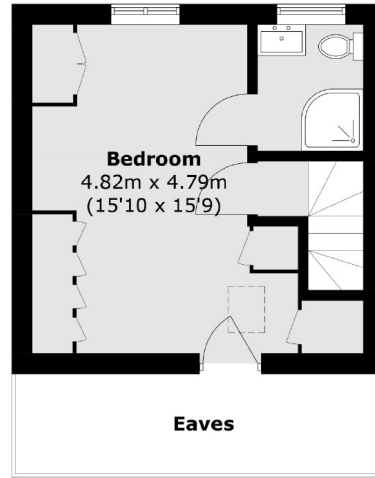


SNELLERS

ESTATE AGENTS

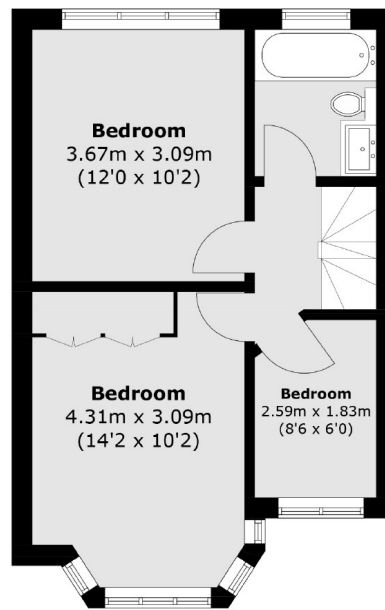


Ground Floor



Eaves

Second Floor



First Floor

Total area (approx.): 111.1 sq. m (1,195.9 sq. ft)
(Excluding Eaves)

Snellers Twickenham Sales
64-66 Heath Road
Twickenham
TW1 4BX
020 8892 5555
twickenhamsales@snellers.co.uk

Energy Rating: C We aim to make our particulars both accurate and reliable. However they are not guaranteed; nor do they form part of an offer or contract. If you require clarification on any points then please contact us, especially if you're traveling some distance to view. Please note that appliances and heating systems have not been tested and therefore no warranties can be given as to their good working order