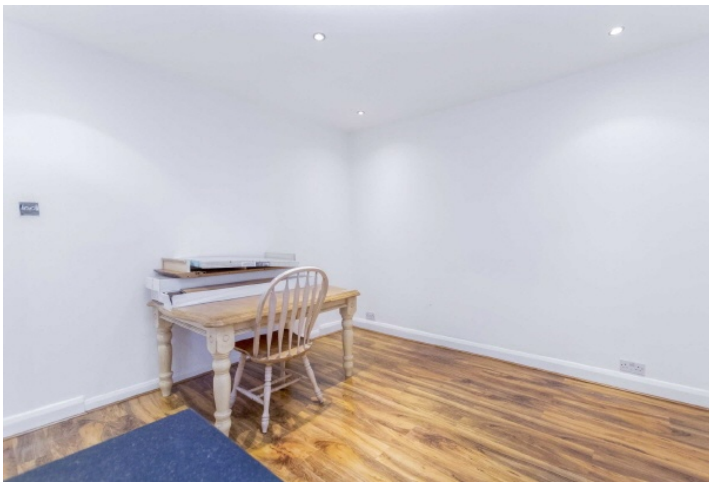


# SNELLERS

ESTATE AGENTS

---



**Hall Road, TW7**

**£2,350 PCM**

Soon to be completed from refurbishment this three bedroom family house on a popular residential road offers great family living, with two bathrooms, space for a home office/fourth bedroom and the added bonus of a large west facing private garden.



Hall road is a popular residential road, well positioned with great transport links to Twickenham, Isleworth and St Margarets. Within easy reach of good local schools.

- Off Street Parking • Private Garden • Two Bathrooms •
- Three Double Bedrooms • Two Reception Rooms • Unfurnished •





# SNELLERS

ESTATE AGENTS

---

Snellers St. Margarets Lettings  
36 Crown Road  
St Margarets  
TW1 3EH  
020 8892 0700  
[stmargaretslettings@snellers.co.uk](mailto:stmargaretslettings@snellers.co.uk)

Energy Rating: We aim to make our particulars both accurate and reliable. However they are not guaranteed; nor do they form part of an offer or contract. If you require clarification on any points then please contact us, especially if you're traveling some distance to view. Please note that appliances and heating systems have not been tested and therefore no warranties can be given as to their good working order