

SNELLERS

ESTATE AGENTS



Whitton Dene, TW3

£425,000

A rare opportunity to purchase a beautifully presented one-bedroom freehold house with its own private south-west facing garden, perfectly suited for first-time buyers, professionals, or investors looking for a stylish and well-located home.

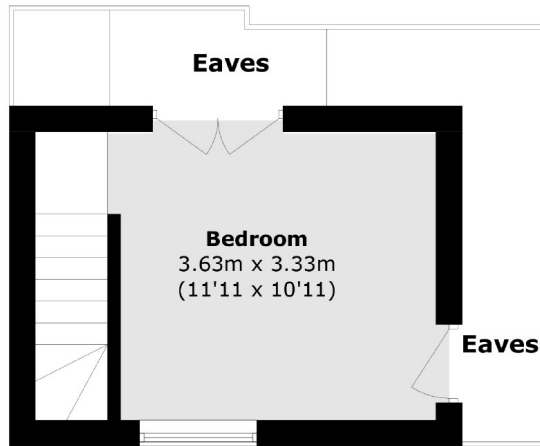


The property features a separate reception room filled with natural light, alongside a spacious kitchen diner that leads directly out to the garden, ideal for entertaining or unwinding in the evening sun. The modern bathroom is located on the ground floor, and upstairs, the generously sized double bedroom offers built-in storage and a peaceful retreat.

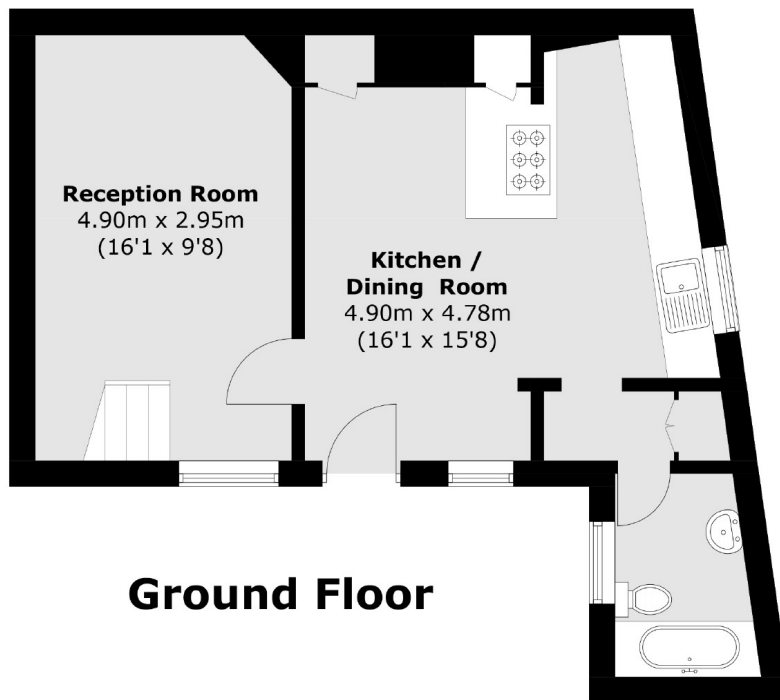
Belmont Mews is located just off Whitton Dene, offering quick access to Hounslow Station (National Rail) and Whitton Station, both providing direct routes to London Waterloo. The area also benefits from nearby green spaces, including Hounslow Heath and Murray Park, along with a good selection of local amenities, supermarkets, and eateries all within easy reach.

- One Bedroom House • Freehold Property • Immaculately Presented •
- End of Terrace • South West Facing Garden • Over 600 Sq Ft •





First Floor



Ground Floor

Total area (approx.): 57.1 sq. m (614.5 sq. ft)
(Excluding Eaves)

Snellers Twickenham Sales
64-66 Heath Road
Twickenham
TW1 4BX
020 8892 5555
twickenhamsales@snellers.co.uk

Energy Rating: C We aim to make our particulars both accurate and reliable. However they are not guaranteed; nor do they form part of an offer or contract. If you require clarification on any points then please contact us, especially if you're traveling some distance to view. Please note that appliances and heating systems have not been tested and therefore no warranties can be given as to their good working order