

SNELLERS

ESTATE AGENTS



Rivermeads Avenue, TW2

£950,000

This beautifully presented four-bedroom semi-detached family home offers over 1,400 sq ft of stylish, well designed living space, thoughtfully arranged over three floors. Ideally suited for modern living, the property also benefits from side and rear access, creating added convenience for families.



The ground floor features a bright and welcoming front reception room complete with a feature fireplace, a guest WC, and a stunning open-plan kitchen and dining area. The kitchen is equipped with a central island and flows effortlessly through bi-folding doors onto a generous south-facing garden, perfect for entertaining and relaxing.

The first floor comprises three bedrooms and a recently refurbished family bathroom.

The top floor boasts an impressive principal bedroom suite with an en suite shower room and a charming Juliet balcony overlooking the garden.

This property is excellently located for highly regarded schools, including the outstanding Waldegrave School, making it an ideal choice for families seeking both quality accommodation and top-tier education options.

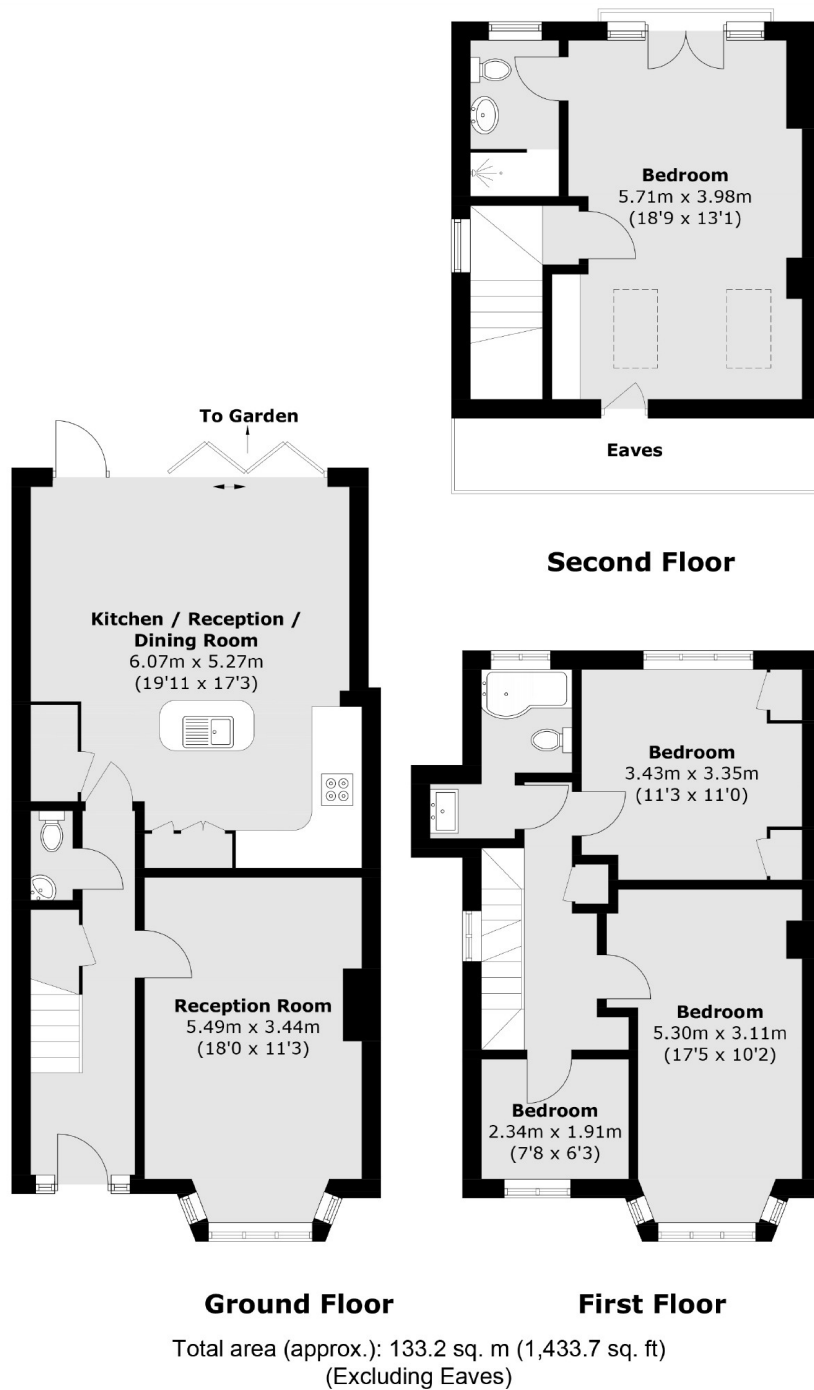
Rivermeads Avenue is a residential street located just off Staines Road. The property is conveniently situated approximately 0.8 miles from both Fulwell and Whitton railway stations, providing direct connections into central London.

- Semi-Detached • Four Bedrooms • Beautifully Presented •
- South-Facing Garden • Excellent Schools • Transport Links •



SNELLERS

ESTATE AGENTS



Snellers Twickenham Sales
64-66 Heath Road
Twickenham
TW1 4BX
020 8892 5555
twickenhamsales@snellers.co.uk

Energy Rating: C We aim to make our particulars both accurate and reliable. However they are not guaranteed; nor do they form part of an offer or contract. If you require clarification on any points then please contact us, especially if you're traveling some distance to view. Please note that appliances and heating systems have not been tested and therefore no warranties can be given as to their good working order