



**London Road, TW1**

**£299,950**

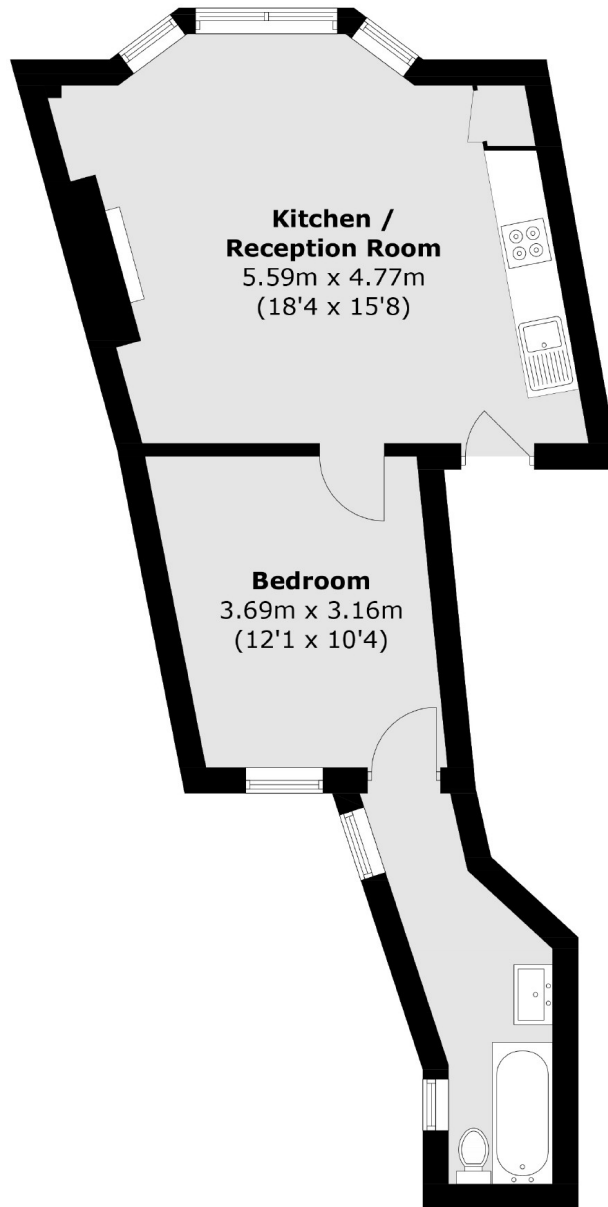
Located in the heart of Twickenham, just a short walk from Twickenham Station and the high street, this first-floor period conversion apartment offers convenience, space, and character. The property features a spacious open-plan kitchen, living, and dining and a well-proportioned double bedroom with a private en-suite bathroom. Additional benefits include access to a shared outdoor decking area, perfect for enjoying warmer weather. An excellent opportunity for first-time buyers, investors, or those seeking a well-connected home in a sought-after location.

The apartment is situated in the heart of Twickenham, with a wide selection of cafés, restaurants and shops just moments away. Twickenham Station is only 0.2 miles from the property, providing fast services into London Waterloo. Marble Hill Park is less than a mile away, and both the River Thames and the lively Church Street are right on your doorstep. This sought-after location offers the perfect balance of convenience, green spaces, and riverside living, making it one of Twickenham's most desirable areas.

- One Double Bedroom • Modern Bathroom • Central Location •
- Period Features • 0.2 Miles to Station • No Onward Chain •

# SNELLERS

ESTATE AGENTS



Total area (approx.): 41.5 sq. m ( 446.7 sq. ft)

Snellers Twickenham Sales  
64-66 Heath Road  
Twickenham  
TW1 4BX  
020 8892 5555  
[twickenhamsales@snellers.co.uk](mailto:twickenhamsales@snellers.co.uk)

Energy Rating: E We aim to make our particulars both accurate and reliable. However they are not guaranteed; nor do they form part of an offer or contract. If you require clarification on any points then please contact us, especially if you're traveling some distance to view. Please note that appliances and heating systems have not been tested and therefore no warranties can be given as to their good working order