



Tower Road, TW1

£435,000

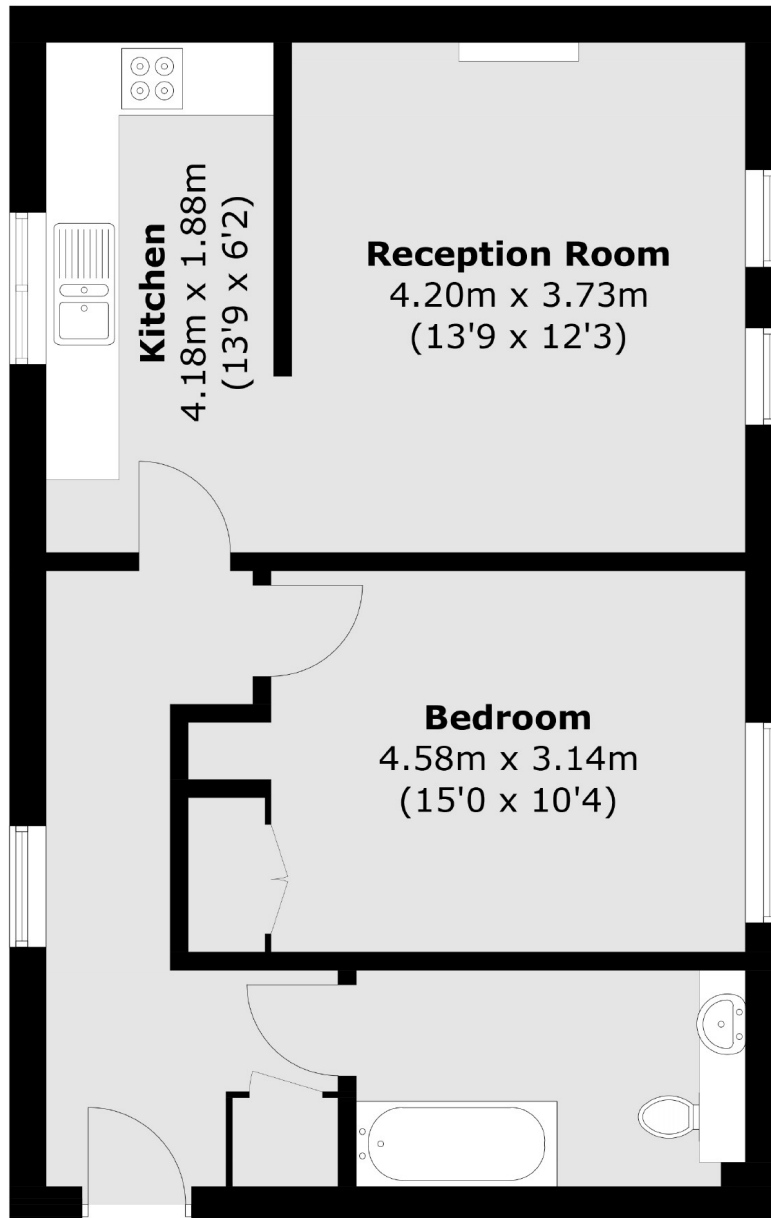
Located in the heart of Strawberry Hill, this beautifully presented ground floor apartment offers an exceptional opportunity for first-time buyers, investors, or those looking to downsize. Set within the sought-after Lexington Court development, this one-bedroom property boasts impressively high ceilings and a generous layout, offering almost 600 sq ft of stylish, well-appointed living space.

Perfectly positioned on Tower Road, Lexington Court enjoys a prime location just moments from Strawberry Hill station, providing direct services to London Waterloo, ideal for commuters. The area offers the best of both worlds: a peaceful, leafy setting with Teddington and Twickenham town centres close by, each offering a vibrant array of shops, cafés, restaurants, and riverside walks.

- Modern Apartment • Ground Floor • One Double Bedroom •
- High Ceilings • Excellent Location • Well-Proportioned •

SNELLERS

ESTATE AGENTS



Total area (approx.): 54.3 sq. m (584.5 sq. ft)

Snellers Twickenham Sales
64-66 Heath Road
Twickenham
TW1 4BX
020 8892 5555
twickenhamsales@snellers.co.uk

Energy Rating: TBC We aim to make our particulars both accurate and reliable. However they are not guaranteed; nor do they form part of an offer or contract. If you require clarification on any points then please contact us, especially if you're traveling some distance to view. Please note that appliances and heating systems have not been tested and therefore no warranties can be given as to their good working order