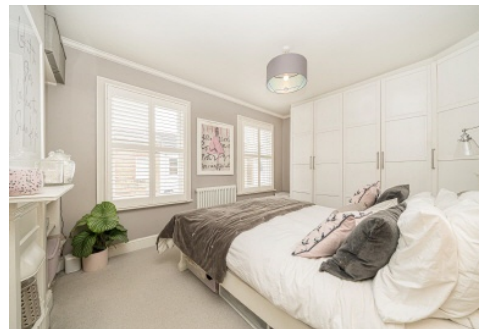


SNELLERS

ESTATE AGENTS



Hamilton Road, TW2

£3,250 PCM

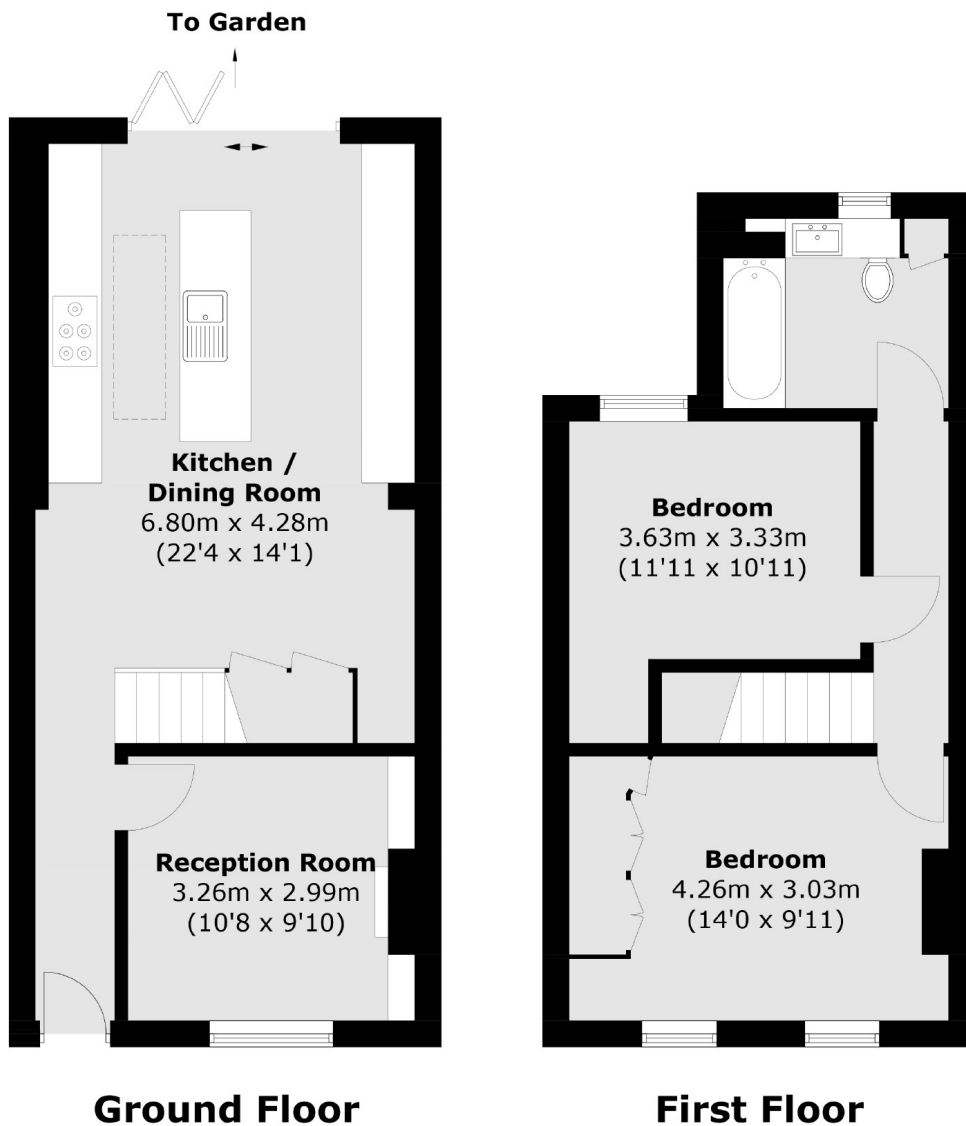
This stunning mid-terrace Victorian cottage has been tastefully modernised and rear extended. Downstairs there is a cosy front living room and a beautiful bespoke open plan kitchen dining room with bi-fold doors leading to the sunny west facing garden. Upstairs has two good sized double bedrooms and a modern family bathroom.

Hamilton Road is moments from Twickenham Green with plenty local shops, pubs and restaurants to choose from. Trafalgar, Waldegrave and Archdeacon schools are all nearby, making this a popular location.

- Immaculately Presented • Victorian Cottage • Two Bedrooms •
- West Facing Garden • Upstairs Bathroom • Sought After Location •

SNELLERS

ESTATE AGENTS



Total area (approx.): 77.7 sq. m (836.3 sq. ft)

Snellers Twickenham Lettings
64-66 Heath Road
Twickenham
TW1 4BX
020 8892 5678
twickenhamlettings@snellers.co.uk

Energy Rating: C We aim to make our particulars both accurate and reliable. However they are not guaranteed; nor do they form part of an offer or contract. If you require clarification on any points then please contact us, especially if you're traveling some distance to view. Please note that appliances and heating systems have not been tested and therefore no warranties can be given as to their good working order