

SNELLERS

ESTATE AGENTS



Hampton Road, TW2

£2,250 PCM

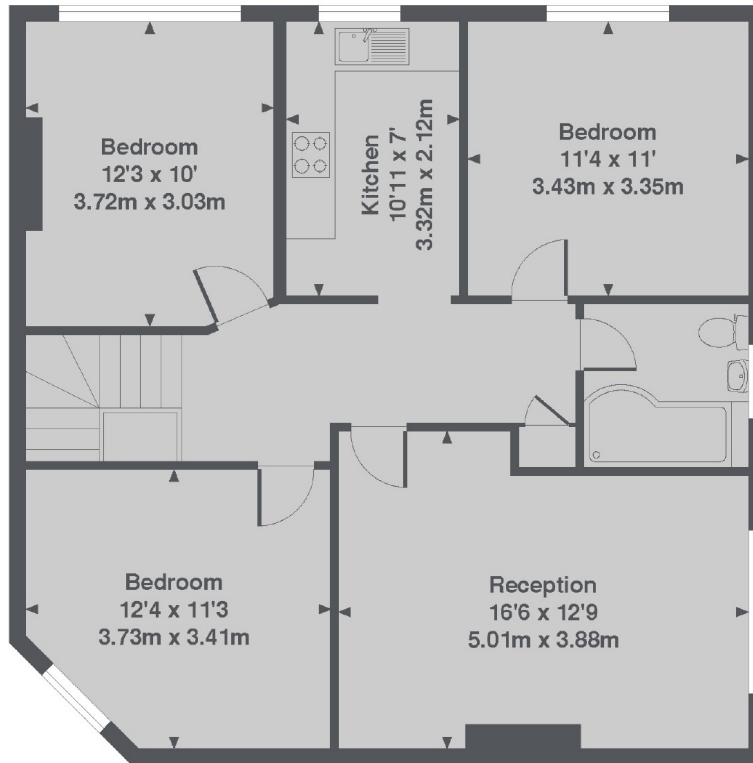
This large three bedroom maisonette is presented in good condition throughout and is in a popular development close to Twickenham Green. Accommodation is made up of a spacious living room with space for dining, a good sized kitchen, a large master bedroom, two further double bedrooms and a bathroom.

Kenilworth Court is located on the popular Hampton Road, which offers great local conveniences. Strawberry Hill mainline station is within half a mile, offering frequent services into London.

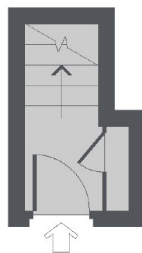
- First Floor Maisonette • Communal Gardens • Garage Available •
- Three Double Bedrooms • Close to Schools • Close to Station •

SNELLERS

ESTATE AGENTS



1st Floor



Ground Floor

Kenilworth Court, Hampton Road, TW2
Total Approx. Floor area 860 Sq. Ft. (79.9 Sq. M.)

Snellers Twickenham Lettings
64-66 Heath Road
Twickenham
TW1 4BX
020 8892 5678
twickenhamlettings@snellers.co.uk

Energy Rating: C We aim to make our particulars both accurate and reliable. However they are not guaranteed; nor do they form part of an offer or contract. If you require clarification on any points then please contact us, especially if you're traveling some distance to view. Please note that appliances and heating systems have not been tested and therefore no warranties can be given as to their good working order