

SNELLERS

ESTATE AGENTS



Mill Road, TW2

£3,000 PCM

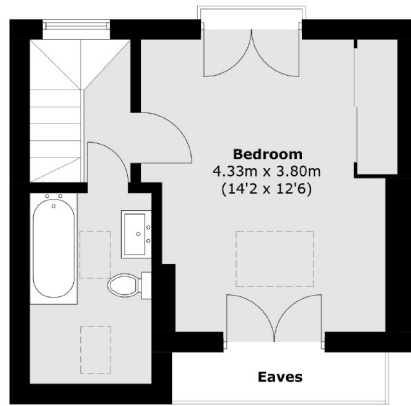
A mid terraced four bedroom house on a quiet street in Twickenham. Along with the four bedrooms, there is one bathroom, a large living room, modern kitchen/dining room and a rear garden which is perfect for summer entertaining.

Mill Road is a popular road for families due to the excellent schools nearby. There are regular buses in to Twickenham and Richmond town centres and Strawberry Hill is nearby with direct transport links into Central London.

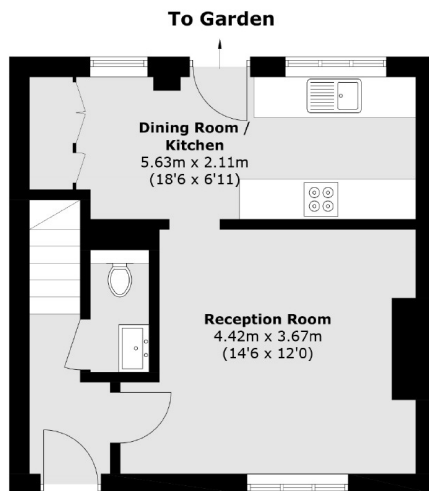
- Four Bedroom House • Kitchen/Dining Room • One Bathrooms •
- Downstairs W/C • Private Rear Garden • Off Street Parking •

SNELLERS

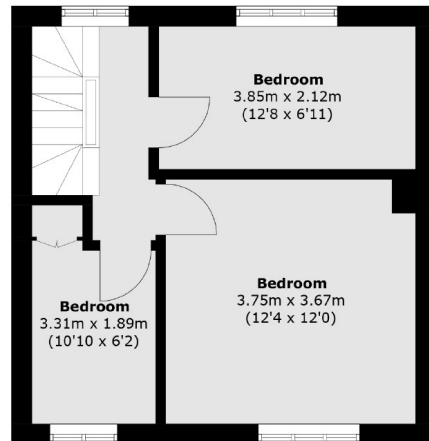
ESTATE AGENTS



Second Floor



Ground Floor



First Floor

Total area (approx.): 92.6 sq. m (996.7 sq. ft)
(Excluding Eaves)

Snellers Twickenham Lettings
64-66 Heath Road
Twickenham
TW1 4BX
020 8892 5678
twickenhamlettings@snellers.co.uk

Energy Rating: We aim to make our particulars both accurate and reliable. However they are not guaranteed; nor do they form part of an offer or contract. If you require clarification on any points then please contact us, especially if you're traveling some distance to view. Please note that appliances and heating systems have not been tested and therefore no warranties can be given as to their good working order