

SNELLERS

ESTATE AGENTS



Mereway Road, TW2

£825,000

This beautifully presented two double bedroom Victorian family home has been tastefully decorated throughout, perfect for both families and commuters with excellent primary and secondary schools nearby and Kneller Gardens at the end of the road. With potential to extend into the loft (STPP) and a South West facing garden, this property is not to be missed.



On the ground floor there is a spacious front reception room with wood flooring and a beautiful ornate fireplace. This room leads onto a pretty country style kitchen with granite worktops and Velux windows. At the back of the house there is a useful WC and conservatory, providing space to dine and entertain and this leads onto a pretty landscaped South West facing garden which gets plenty of sunshine.

On the first floor there are two double bedrooms and a modern family bathroom. The master bedroom has bespoke fitted wardrobes and double aspect windows. There is potential to convert the loft, subject to the usual planning consents, making this a home that you can grow into over time.

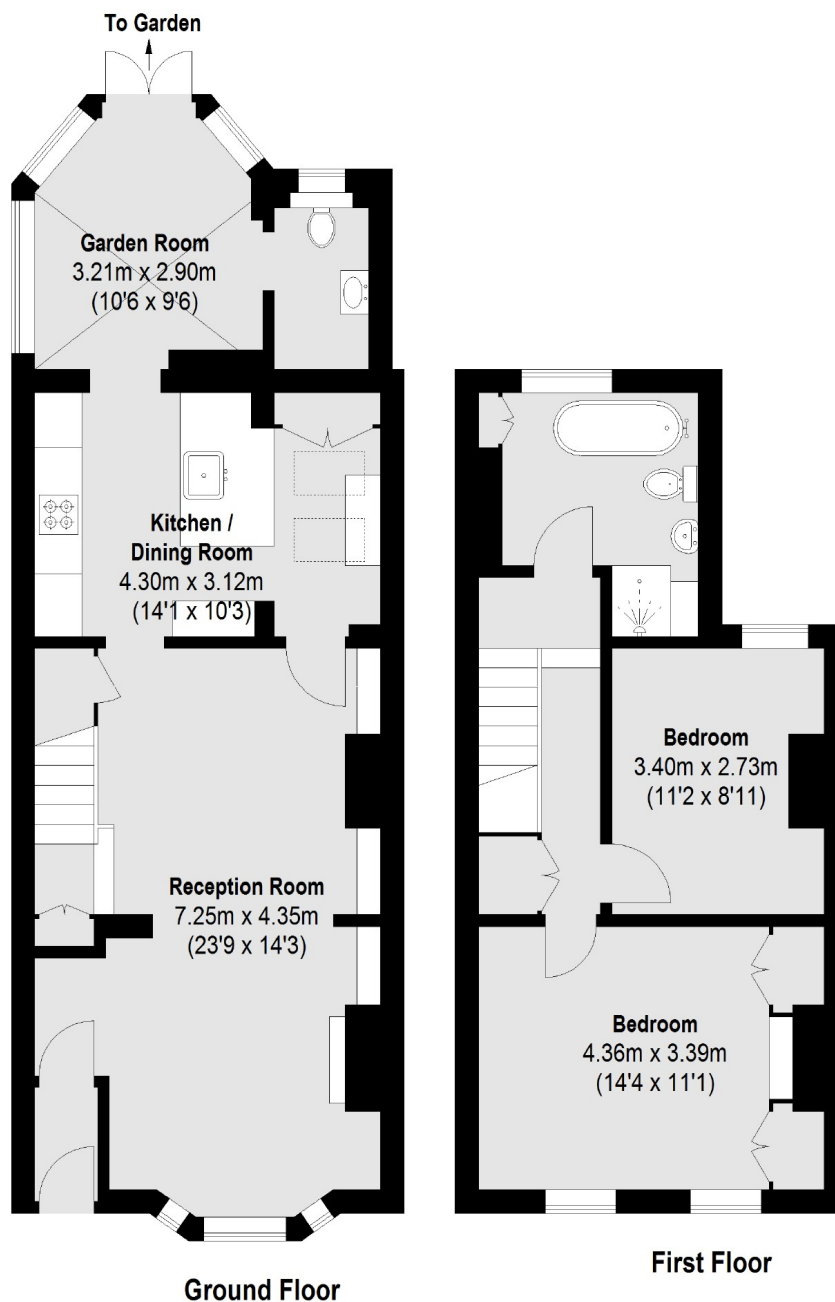
Mereway Road is a residential Street just 0.2 miles from Twickenham Green and 0.7 miles from Strawberry Hill Station which has direct trains to London Waterloo. Twickenham Station is under a mile away along with the high street which has plenty of pubs, restaurants and shops to enjoy. Kneller Gardens is at the end of the street and has tennis courts, a café, plenty of green space and views of the River Crane.

- Victorian • Potential To Loft Convert STPP • School Catchments •
- Two Bedrooms • Landscaped Garden • Close to Kneller Gardens •



SNELLERS

ESTATE AGENTS



Total area (approx.): 97.93 sq. m (1054 Sq. ft)

Snellers Twickenham Sales
64-66 Heath Road
Twickenham
TW1 4BX
020 8892 5555
twickenhamsales@snellers.co.uk

Energy Rating: C We aim to make our particulars both accurate and reliable. However they are not guaranteed; nor do they form part of an offer or contract. If you require clarification on any points then please contact us, especially if you're traveling some distance to view. Please note that appliances and heating systems have not been tested and therefore no warranties can be given as to their good working order