

SNELLERS

ESTATE AGENTS



Natalie Mews, TW2

£2,500 PCM

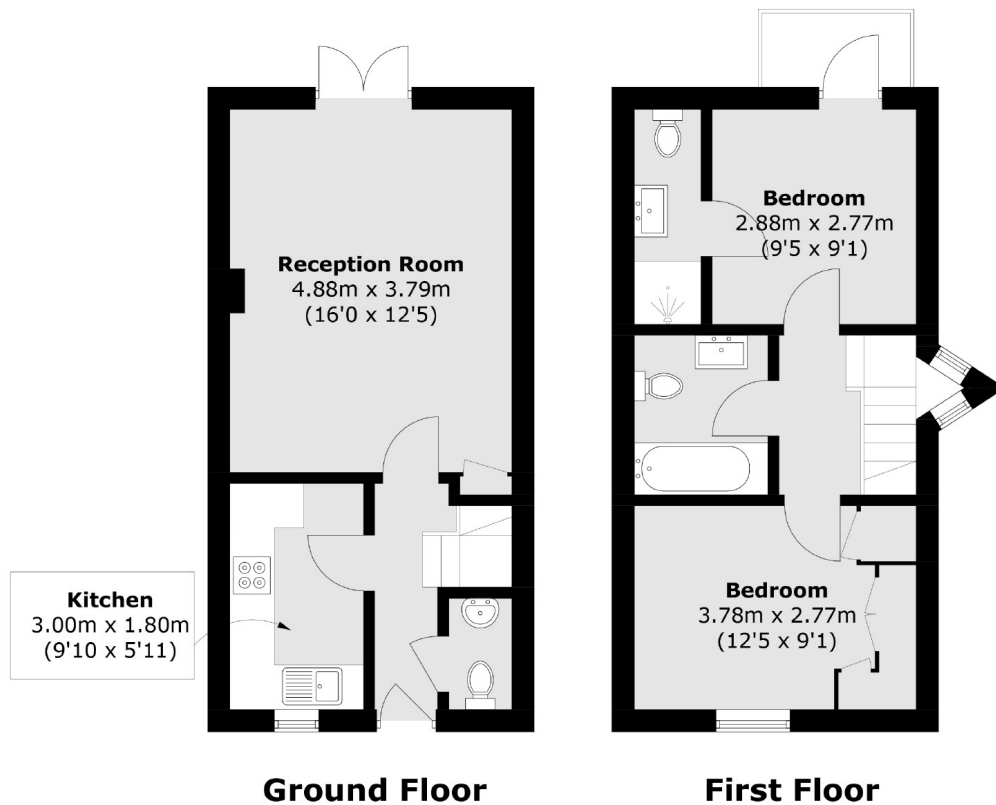
A two bedroom terraced house situated in a gated development with views overlooking the picturesque Fulwell Golf Club. Upstairs the property has two double bedrooms, with the master bedroom including an en-suite bathroom and private balcony which looks directly over Fulwell Gold Course which is kept immaculately year round. Downstairs there is a separate kitchen, downstairs W.C and a throughout reception room leading to a private patio garden. The property also comes with one allocated parking space inside the gated community.

Natalie Mews is located off of Sixth Cross Road in Twickenham and is only 0.3 miles to Fulwell Station as well as an array of nearby shops and restaurants. The property also sits close to several excellent schools.

- Two Double Bedrooms • Two Bathrooms • Gated Development •
- Views Over Golf Course • Allocated Parking • Balcony & Private Garden •

SNELLERS

ESTATE AGENTS



Total area (approx.): 62.1 sq. m (668.5 sq. ft)
External area : 2.0 sq. m (21.5 sq. ft)

Snellers Twickenham Lettings
64-66 Heath Road
Twickenham
TW1 4BX
020 8892 5678
twickenhamlettings@snellers.co.uk

Energy Rating: We aim to make our particulars both accurate and reliable. However they are not guaranteed; nor do they form part of an offer or contract. If you require clarification on any points then please contact us, especially if you're traveling some distance to view. Please note that appliances and heating systems have not been tested and therefore no warranties can be given as to their good working order