



## Constance Road, TW2

£399,950

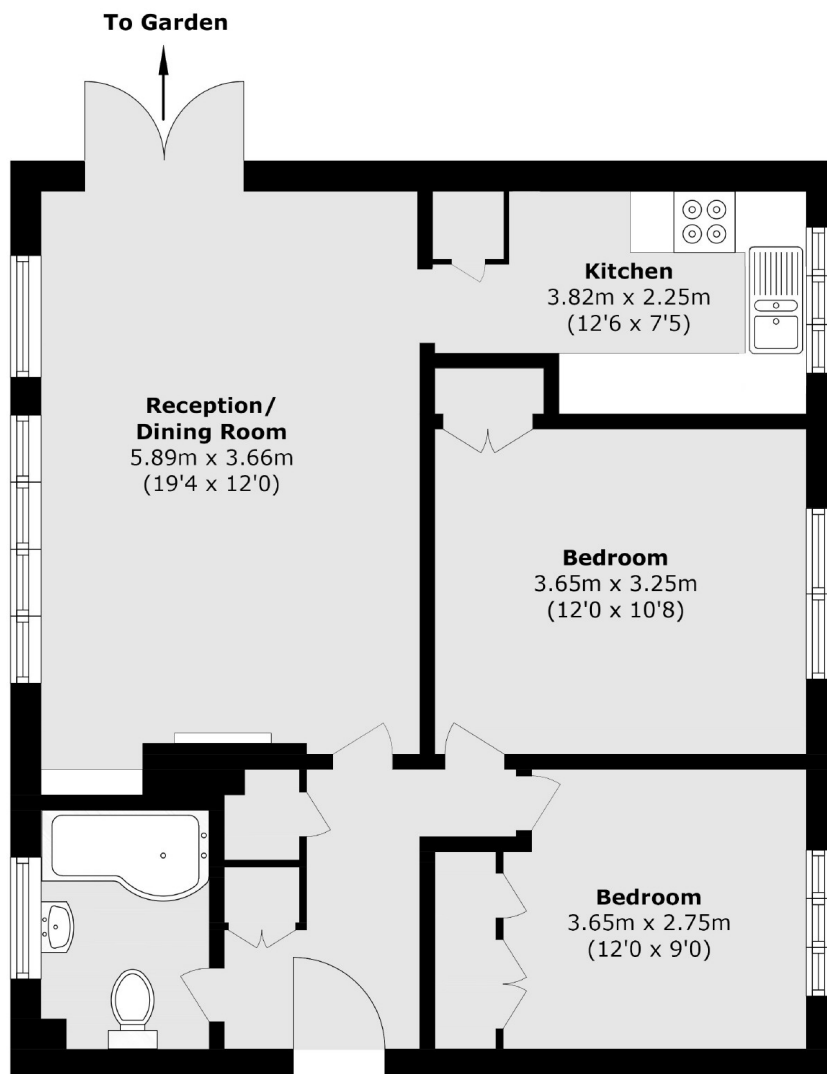
This spacious two double bedroom ground floor apartment is excellently located for the high street and Whitton Station, which is only 0.1 miles away. There are fantastic schools nearby too making this property perfect for families, commuters and those looking to downsize and/or live on one level. Offered to the market with a share of the freehold, plenty of parking in the development and no onward chain, this property is not to be missed.

Oaklands is a popular residential development located just 0.1 miles from Whitton high street and station and with plenty of fantastic primary and secondary schools nearby.

- Ground Floor • Two Double Bedrooms • Communal Gardens •
- Parking • Central Location • Share Of Freehold •

# SNELLERS

ESTATE AGENTS



Total area (approx.): 63.4 sq. m (682.4 sq. ft)

Snellers Twickenham Sales  
64-66 Heath Road  
Twickenham  
TW1 4BX  
020 8892 5555  
[twickenhamsales@snellers.co.uk](mailto:twickenhamsales@snellers.co.uk)

Energy Rating: C We aim to make our particulars both accurate and reliable. However they are not guaranteed; nor do they form part of an offer or contract. If you require clarification on any points then please contact us, especially if you're traveling some distance to view. Please note that appliances and heating systems have not been tested and therefore no warranties can be given as to their good working order