

SNELLERS

ESTATE AGENTS



Cross Lances Road, TW3

£550,000

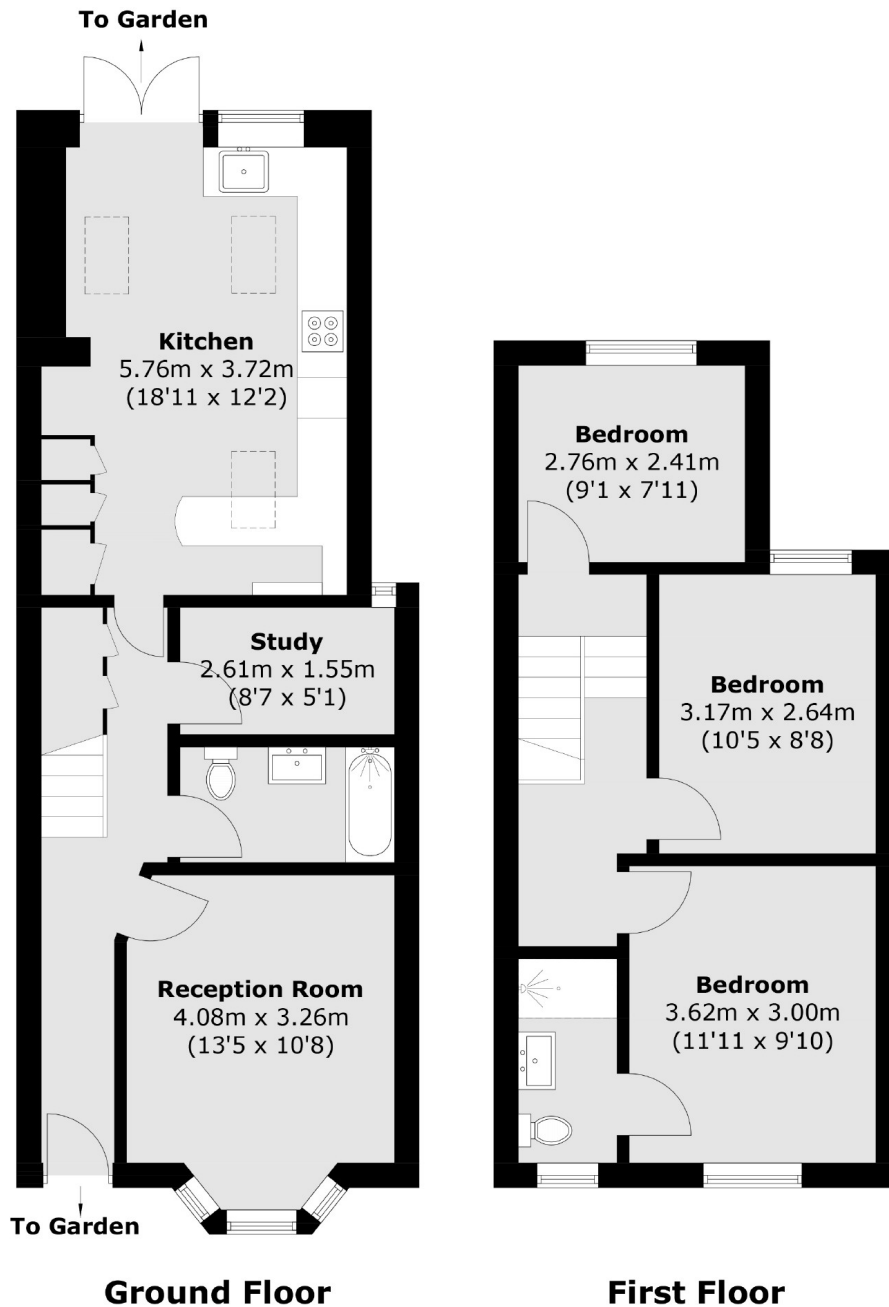
A beautifully presented three bedroom, two bathroom period family home with high ceilings and plenty of period charm. On the ground floor there is a front reception room, a modern family bathroom, a study and an extended kitchen/dining room which leads onto a pretty landscaped garden with rear access. The first floor continues to impress with three bedrooms, one of which has an en suite bathroom. There is potential to extend into the loft STPP.

Cross Lances is a residential street, excellently located for the town centre and Hounslow Station, which are both within half a mile, as well as local primary and secondary schools.

- Victorian Home • Three Bedrooms • Rear Extended •
- Beautifully Renovated • Central Location • Potential To Extend STPP •

SNELLERS

ESTATE AGENTS



Total area (approx.): 89.6 sq. m (964.5 sq. ft)

Snellers Twickenham Sales
64-66 Heath Road
Twickenham
TW1 4BX
020 8892 5555
twickenhamsales@snellers.co.uk

Energy Rating: We aim to make our particulars both accurate and reliable. However they are not guaranteed; nor do they form part of an offer or contract. If you require clarification on any points then please contact us, especially if you're traveling some distance to view. Please note that appliances and heating systems have not been tested and therefore no warranties can be given as to their good working order