



Brinsworth Close, TW2

£3,000 PCM

A deceptively spacious three bedroom house, located in a quiet cul-de-sac. This fantastic family home offers a large reception room with a separate kitchen/diner. On the first floor there are two great size double bedrooms (the master with extensive storage) and a family bathroom and on the third floor a large double bedroom with an en-suite.

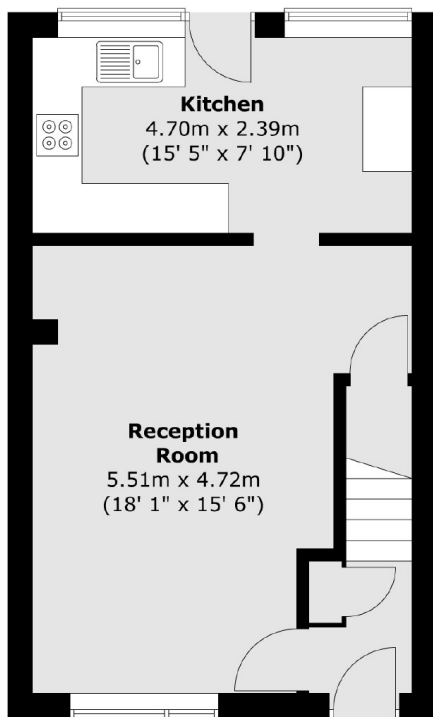
Brinsworth Close is located off Staines Road, just 0.4 miles to Twickenham Green. Excellently located for a range of outstanding local schools, shops and cafés. Strawberry Hill and Fulwell Stations are less than 1 mile away.

- Well Presented • Quiet Cul-de-Sac • Three Large Double Bedrooms •
- Kitchen Diner • Spacious Reception Room • Lawned & Decked Garden •

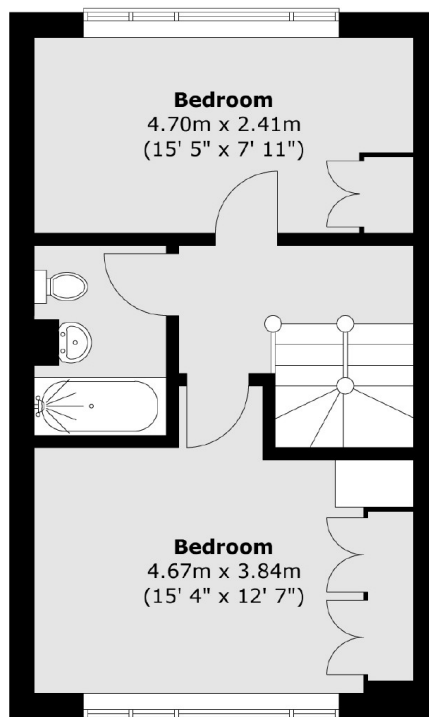
SNELLERS

ESTATE AGENTS

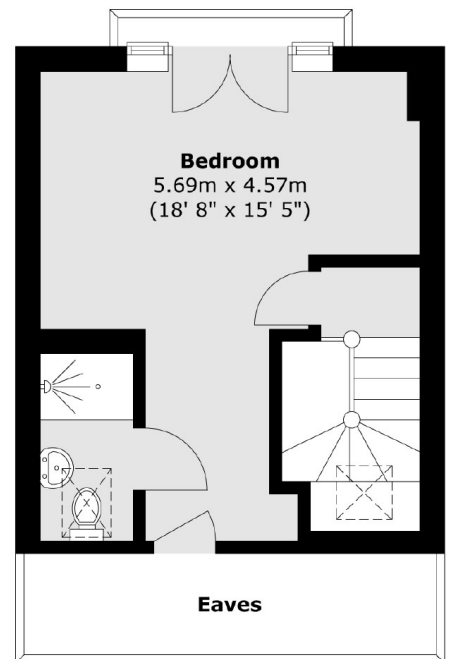
Ground Floor



First Floor



Second Floor



Total area (approx.) : 103.2 sq. m (1111 sq. ft)
Total balcony area (approx.) : 1 sq. m (11 sq. ft)

Snellers Twickenham Lettings
64-66 Heath Road
Twickenham
TW1 4BX
020 8892 5678
twickenhamlettings@snellers.co.uk

Energy Rating: We aim to make our particulars both accurate and reliable. However they are not guaranteed; nor do they form part of an offer or contract. If you require clarification on any points then please contact us, especially if you're traveling some distance to view. Please note that appliances and heating systems have not been tested and therefore no warranties can be given as to their good working order