

# SNELLERS

ESTATE AGENTS



## Third Cross Road, TW2

£625,000

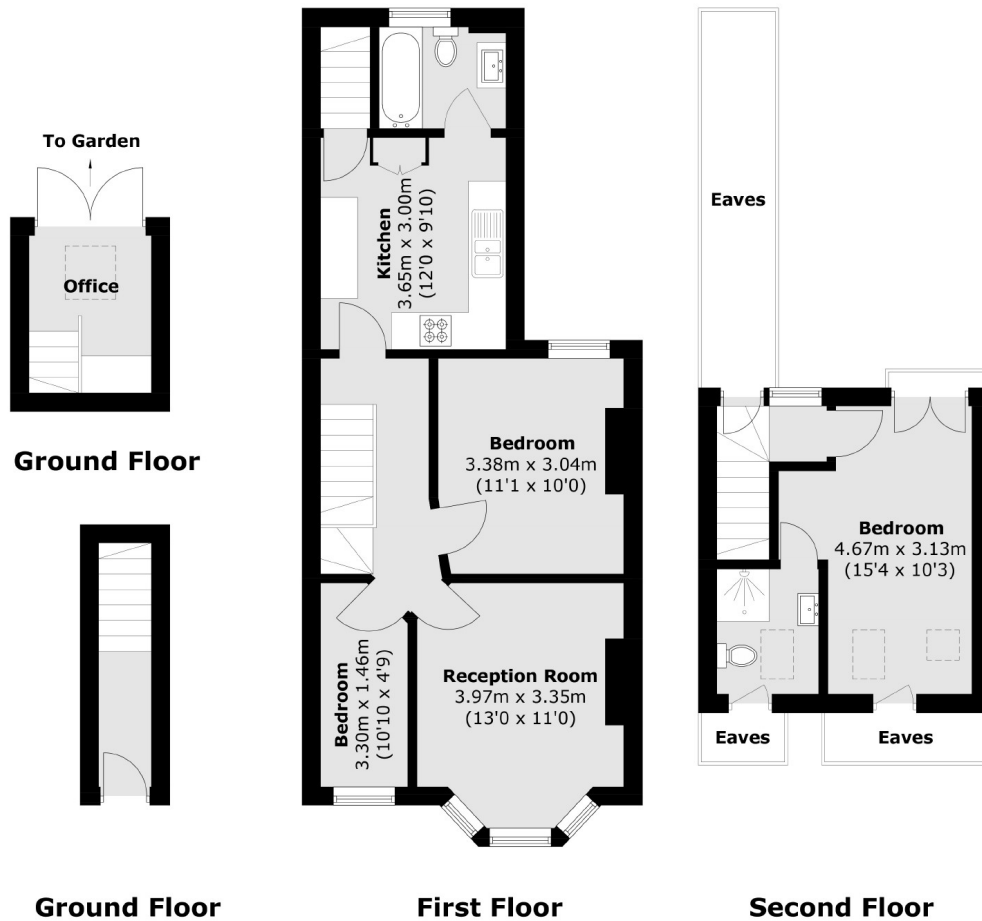
This beautifully presented three bedroom Victorian maisonette offers 861 sq ft of well proportioned living space with the added benefit of a low maintenance West facing private garden with rear access. On the first floor there is a reception room, two bedrooms, a modern eat-in kitchen and a bathroom which has been renovated. There is a double bedroom and en suite bathroom in the loft which has been recently converted. The property is perfectly located for excellent primary and secondary schools including the highly regarded Waldegrave School.

Third Cross Road is a residential street just 0.4 miles from Twickenham Green and 0.6 miles from Strawberry Hill Station which has direct trains to London Waterloo. Twickenham Station is just over a mile away along with the high street which has plenty of pubs, restaurants and shops to enjoy.

- Maisonette • Three Bedrooms • Period Property •
- Loft Converted • West Facing Garden • Rear Access •

# SNELLERS

ESTATE AGENTS



Total area (approx.): 80.0 sq. m (861.1 sq. ft)  
(Excluding Eaves)

Snellers Twickenham Sales  
64-66 Heath Road  
Twickenham  
TW1 4BX  
020 8892 5555  
[twickenhamsales@snellers.co.uk](mailto:twickenhamsales@snellers.co.uk)

Energy Rating: We aim to make our particulars both accurate and reliable. However they are not guaranteed; nor do they form part of an offer or contract. If you require clarification on any points then please contact us, especially if you're traveling some distance to view. Please note that appliances and heating systems have not been tested and therefore no warranties can be given as to their good working order