



St. Stephens Road, TW3

£549,950

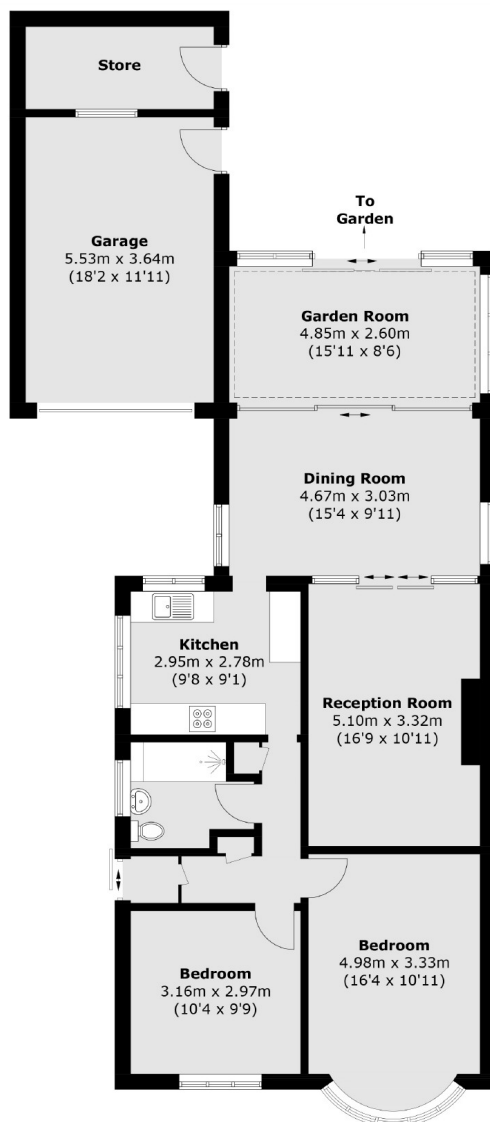
This fantastic detached freehold bungalow offers two double bedrooms, generous living space, a garage, and plenty of off-street parking. With no onward chain and potential for expansion (STPP), this property is not to be missed.

St Stephens Road is one of the areas best, premium residential roads, just 0.3 miles from Hounslow train station and 0.6 Miles from the popular Heathland School. Hounslow station is just over half a mile away with direct links into London Waterloo. Hounslow and Whitton High Street are 0.8 miles and 1 mile away so there are plenty of shops, bars and restaurants close to hand.

- Detached Bungalow • Two Double Bedrooms • Extension Potential STPP •
- Garage • Off-Street Parking • No Onward Chain •

SNELLERS

ESTATE AGENTS



Approx Internal Area: 95.3 sq. m (1,025.8 sq. ft)
Garage / Store: 26.8 sq. m (288.5 sq. ft)
Total: 122.1 sq. m (1,314.3 sq. ft)

Snellers Twickenham Sales
64-66 Heath Road
Twickenham
TW1 4BX
020 8892 5555
twickenhamsales@snellers.co.uk

Energy Rating: D We aim to make our particulars both accurate and reliable. However they are not guaranteed; nor do they form part of an offer or contract. If you require clarification on any points then please contact us, especially if you're traveling some distance to view. Please note that appliances and heating systems have not been tested and therefore no warranties can be given as to their good working order