



Talma Gardens, TW2

£335,000

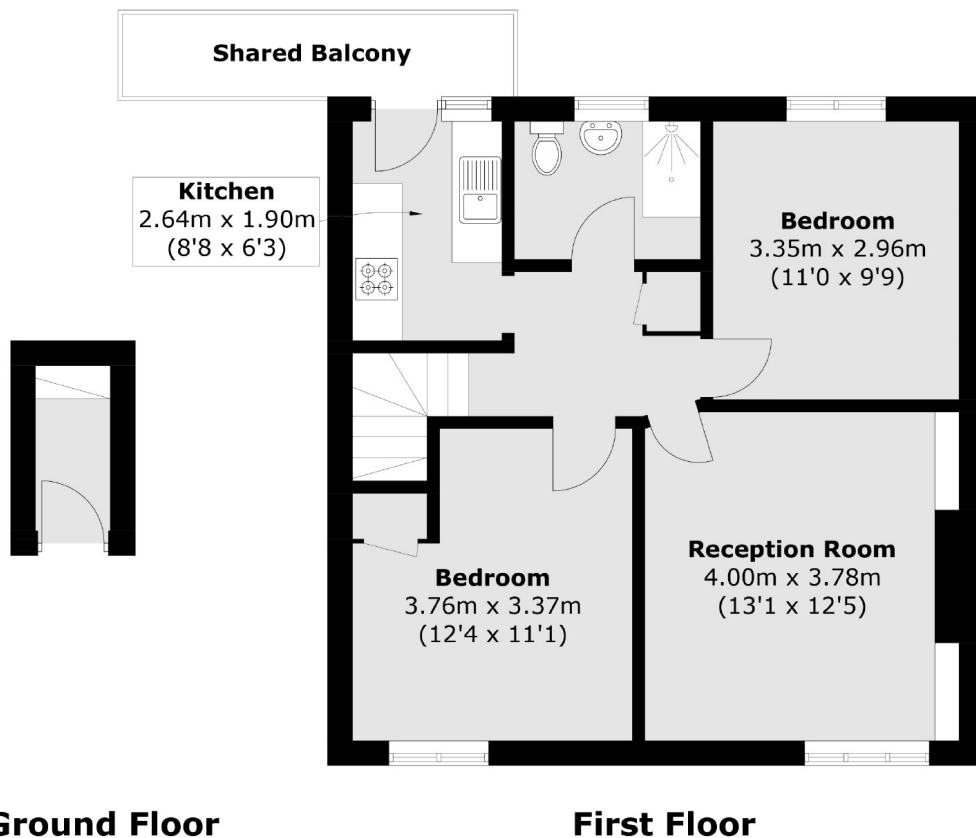
This fantastic two bedroom, modern first floor maisonette with communal garden is offered to the market in excellent condition and with no onward chain. Perfect for families, commuters, buy to let landlords and first time buyers, this property is not to be missed!

Talma Gardens is a popular residential road just 0.7 miles from Twickenham Station with fast links to London Waterloo and the high street which has plenty of shops, pubs and restaurants.

- Well Presented • Two Double Bedrooms • First Floor •
- Private Entrance • Communal Garden • Close to Station •

SNELLERS

ESTATE AGENTS



Ground Floor

First Floor

Total area (approx.): 56.5 sq. m (608.1 sq. ft)
Shared Balcony area (approx.): 4.7 sq. m (50.5 sq. ft)

Snellers Twickenham Sales
64-66 Heath Road
Twickenham
TW1 4BX
020 8892 5555
twickenhamsales@snellers.co.uk

Energy Rating: C We aim to make our particulars both accurate and reliable. However they are not guaranteed; nor do they form part of an offer or contract. If you require clarification on any points then please contact us, especially if you're traveling some distance to view. Please note that appliances and heating systems have not been tested and therefore no warranties can be given as to their good working order