

# SNELLERS

ESTATE AGENTS



**Richmond Road, TW1**

**£425,000**

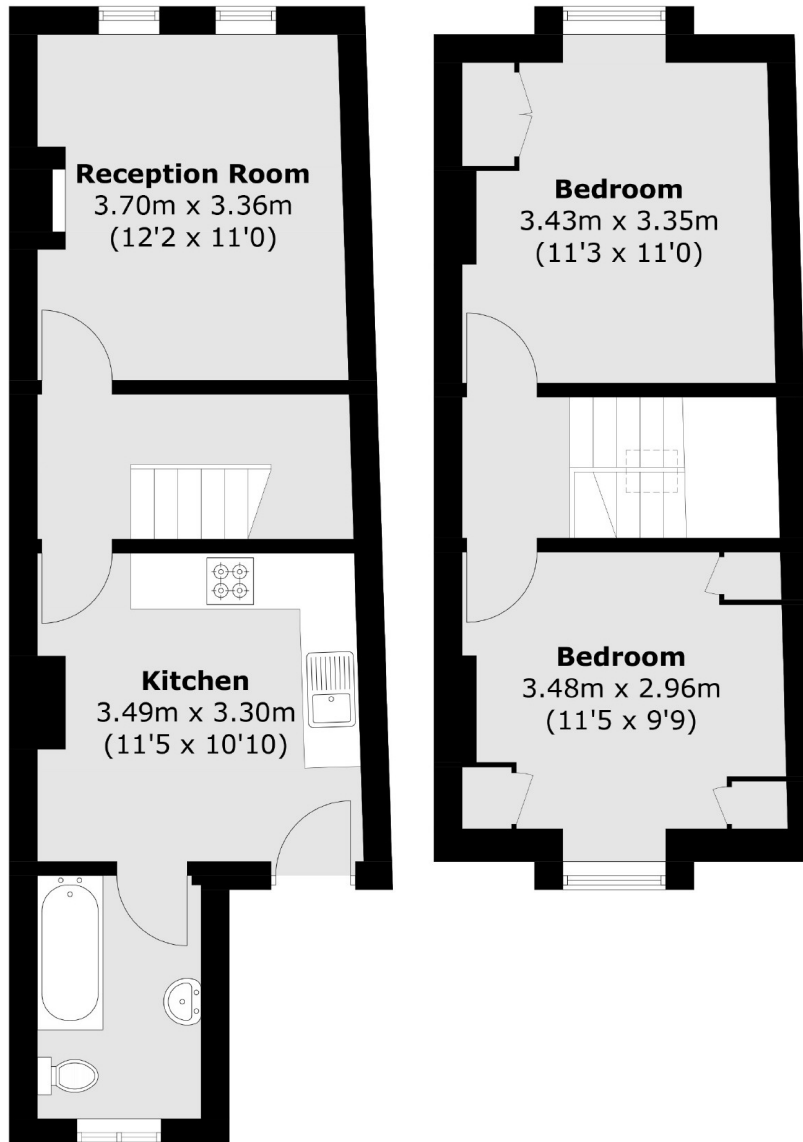
This beautifully presented split-level period conversion apartment is situated in the heart of Twickenham. The first floor features a welcoming reception room, a generously sized separate kitchen and a contemporary bathroom, while the second floor offers two spacious double bedrooms.

Richmond Road connects Twickenham to St. Margarets and is perfectly located for excellent primary and secondary schools including the sought after Orleans Park. Twickenham Station is only half a mile away with fast links to London Waterloo and Marble Hill Park is only 0.3 miles from the property. With the River Thames and Church Street's restaurants, café's and bars on your doorstep, this would be considered by many as one of the most desirable locations in Twickenham.

- Two Double Bedrooms • Split Level • Separate Kitchen •
- Sought After Location • Close to Station • Over 675 Sq Ft •

# SNELLERS

ESTATE AGENTS



**First Floor**

**Second Floor**

Total area (approx.): 62.9 sq. m (677.0 sq. ft)

Snellers Twickenham Sales  
64-66 Heath Road  
Twickenham  
TW1 4BX  
020 8892 5555  
[twickenhamsales@snellers.co.uk](mailto:twickenhamsales@snellers.co.uk)

Energy Rating: D We aim to make our particulars both accurate and reliable. However they are not guaranteed; nor do they form part of an offer or contract. If you require clarification on any points then please contact us, especially if you're traveling some distance to view. Please note that appliances and heating systems have not been tested and therefore no warranties can be given as to their good working order