

SNELLERS

ESTATE AGENTS



Lincoln Avenue, TW2

£799,950

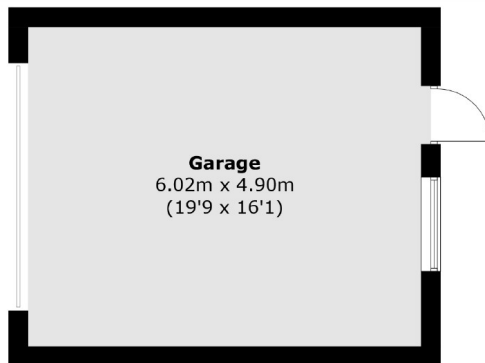
This charming 1930s family home offers spacious living accommodation with a separate formal living room, an open-plan kitchen/diner, a utility room/pantry, and a convenient downstairs WC. The first floor includes two well-proportioned double bedrooms, a single bedroom, and a family bathroom, while the loft has been converted into a luxurious master bedroom with an en-suite. Externally, the property boasts off-street parking and a South-West facing garden with a large garage currently used as a home gym, making it an ideal choice for modern family living.

Lincoln Avenue is a highly desirable street within the prestigious 'Counties' area. The property is ideally situated just 0.4 miles from Kneller Gardens and only 0.6 miles from Twickenham Green and Whitton Station. Additionally, Strawberry Hill Station is located just under a mile away, while Twickenham High Street and its station are conveniently positioned just over a mile from the residence. The property is perfectly located for fantastic primary and secondary schools.

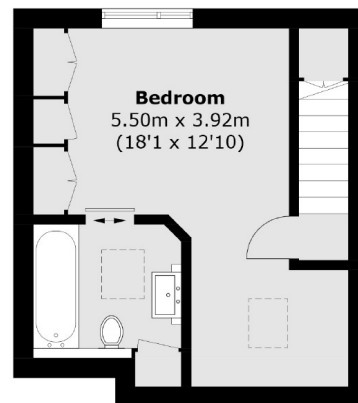
- 1930's Family Home • Four Bedrooms • Two Bathrooms •
- Off-street Parking • South-West Facing Garden • Sought After Road •

SNELLERS

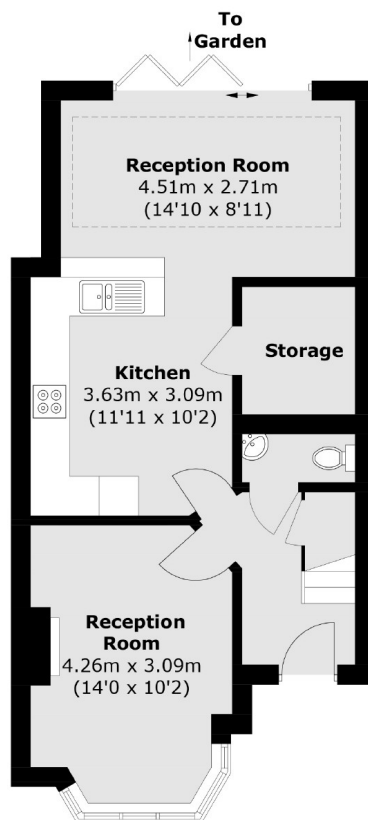
ESTATE AGENTS



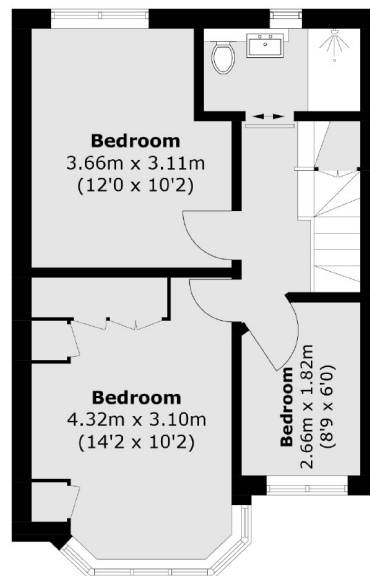
(Not Shown In Actual Location / Orientation)



Second Floor



Ground Floor



First Floor

Total area (approx.): 111.9 sq. m (1,204.5 sq. ft)
Garage area (approx.): 29.6 sq. m (318.6 sq. ft)

Snellers Twickenham Sales
64-66 Heath Road
Twickenham
TW1 4BX
020 8892 5555
twickenhamsales@snellers.co.uk

Energy Rating: D We aim to make our particulars both accurate and reliable. However they are not guaranteed; nor do they form part of an offer or contract. If you require clarification on any points then please contact us, especially if you're traveling some distance to view. Please note that appliances and heating systems have not been tested and therefore no warranties can be given as to their good working order