

# SNELLERS

ESTATE AGENTS



## Richmond Road, TW1

£425,000

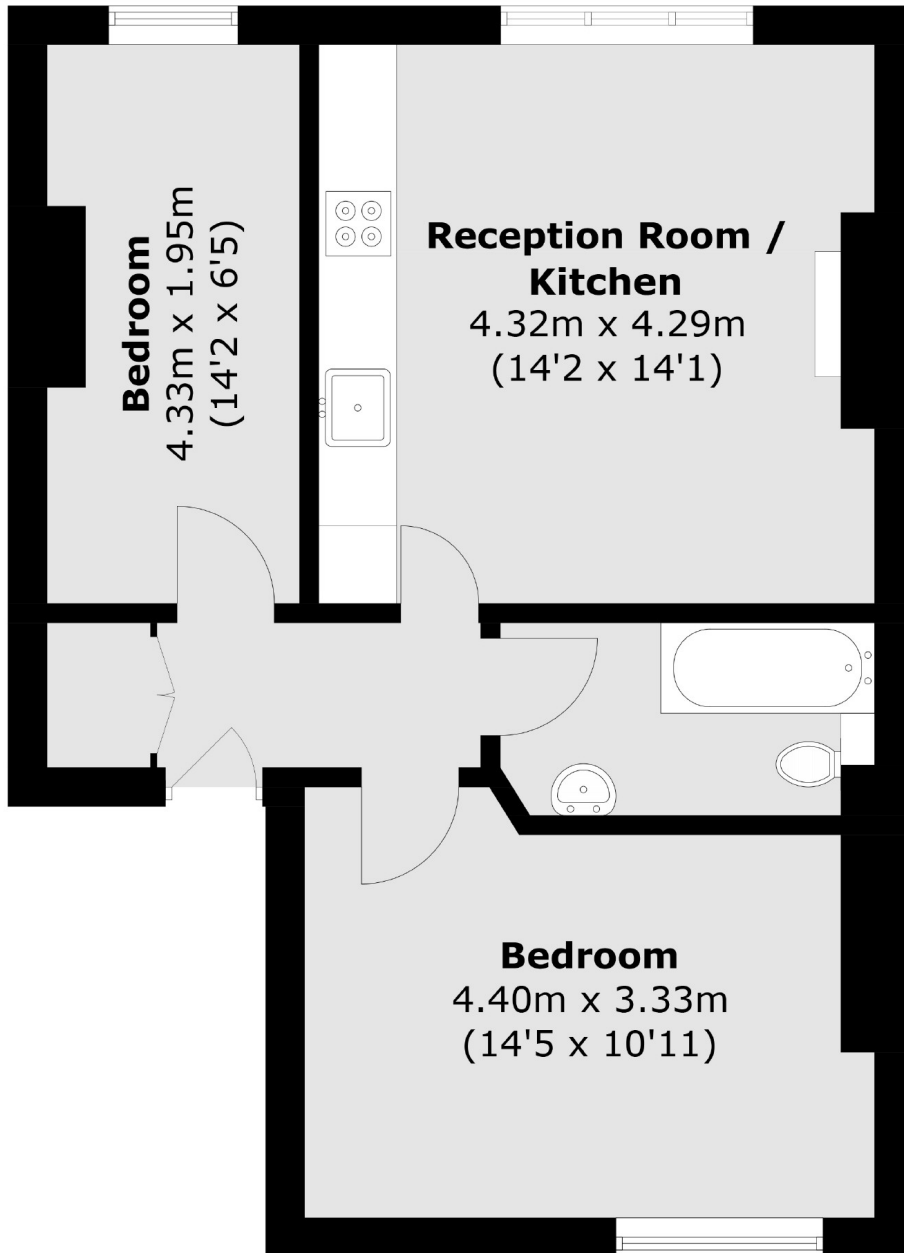
This stunning two bedroom first floor period conversion apartment is located in the heart of Twickenham. There is an entrance hall which has plenty of storage, two double bedrooms, a modern bathroom and a beautifully refurbished open plan kitchen/living room with incredibly high ceilings, an ornate fireplace and original windows and flooring. If you are looking for a property with character and charm, this is the one for you!

Richmond Road connects Twickenham to St. Margarets and is perfectly located for excellent primary and secondary schools including the sought after Orleans Park. Twickenham Station is only half a mile away with fast links to London Waterloo and Marble Hill Park is only 0.3 miles from the property. With the River Thames and Church Street's restaurants, café's and bars on your doorstep, this would be considered by many as one of the most desirable locations in Twickenham.

- Two Bedroom Apartment • First Floor • Period Features •
- Transport Links • Excellent School Catchments • Marble Hill Park •

# SNELLERS

ESTATE AGENTS



Total area (approx.): 51.1 sq. m (550.0 sq. ft)

Snellers Twickenham Sales  
64-66 Heath Road  
Twickenham  
TW1 4BX  
020 8892 5555  
twickenhamsales@snellers.co.uk

Energy Rating: C We aim to make our particulars both accurate and reliable. However they are not guaranteed; nor do they form part of an offer or contract. If you require clarification on any points then please contact us, especially if you're traveling some distance to view. Please note that appliances and heating systems have not been tested and therefore no warranties can be given as to their good working order