

SNELLERS

ESTATE AGENTS



Garfield Road, TW1

£299,950

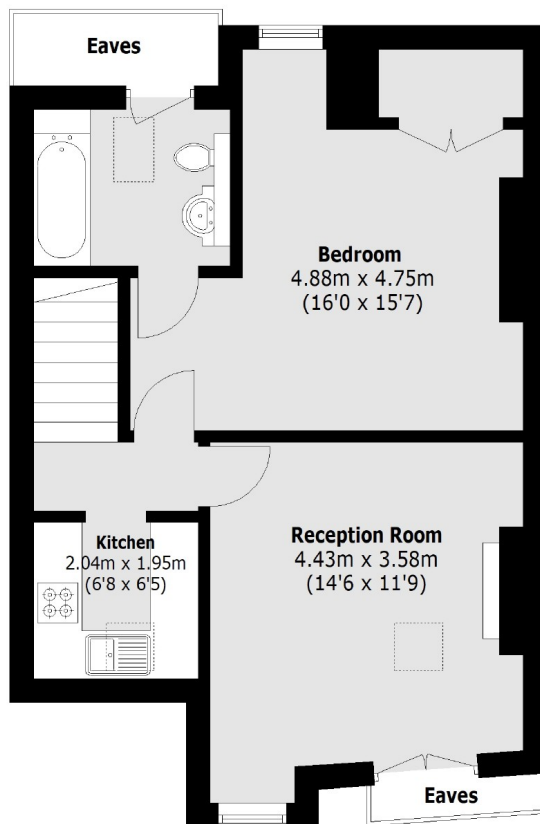
This well presented top floor apartment is set within a well maintained building in the heart of Twickenham. The property is incredibly light and has one double bedroom, a modern bathroom and a separate kitchen and reception room. It is offered to the market in fantastic condition and with no onward chain. With over 580 sq ft of living space, this property is not to be missed.

Garfield Road is Just 0.2 miles from Twickenham Station with fast links to London Waterloo. With the River Thames and Church Street's restaurants, café's and bars on your doorstep, this would be considered by many as one of the most desirable locations in Twickenham.

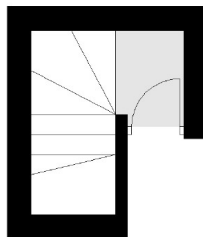
- Top Floor • One Double Bedroom • Central Location •
- No Onward Chain • Excellent Transport Links • Share of Freehold •

SNELLERS

ESTATE AGENTS



Top Floor



First Floor

Total area (approx.): 54.1 sq. m (582.3 Sq. ft)
(Excluding Eaves)

Snellers Twickenham Sales
64-66 Heath Road
Twickenham
TW1 4BX
020 8892 5555
twickenhamsales@snellers.co.uk

Energy Rating: D We aim to make our particulars both accurate and reliable. However they are not guaranteed; nor do they form part of an offer or contract. If you require clarification on any points then please contact us, especially if you're traveling some distance to view. Please note that appliances and heating systems have not been tested and therefore no warranties can be given as to their good working order