

SNELLERS

ESTATE AGENTS



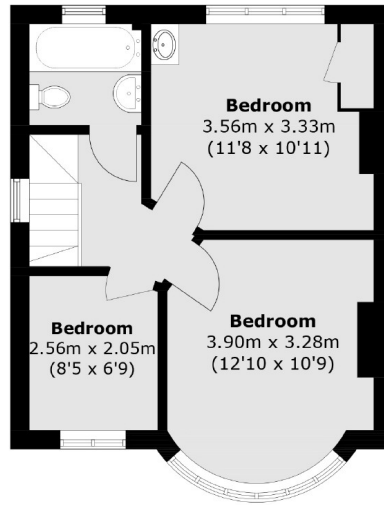
Glasbrook Avenue, TW2

£649,950

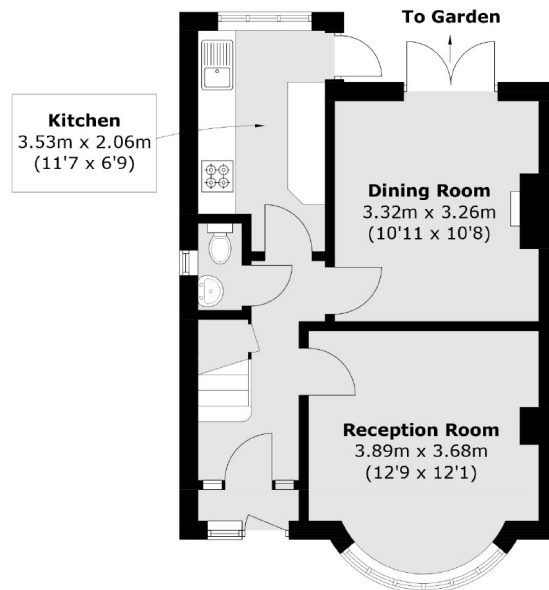
A charming semi detached family home in this sought after development. The property is well presented throughout and benefits from three bedrooms, two reception rooms, a pretty rear garden and the potential to extend (STPP).

Glasbrook Avenue is a highly desirable residential road forming part of the 'Woodlawn Estate'. Close by are many great transport links and Whitton Station and the high street is just over a mile away.

- Vacant Possession • Three Bedrooms • Well Presented •
- Desirable Road • Close to Station • Potential to Extend (STPP) •



First Floor



Ground Floor

Total area (approx.): 78.4 sq. m (843.8 sq. ft)

Snellers Twickenham Sales
64-66 Heath Road
Twickenham
TW1 4BX
020 8892 5555
twickenhamsales@snellers.co.uk

Energy Rating: We aim to make our particulars both accurate and reliable. However they are not guaranteed; nor do they form part of an offer or contract. If you require clarification on any points then please contact us, especially if you're traveling some distance to view. Please note that appliances and heating systems have not been tested and therefore no warranties can be given as to their good working order