



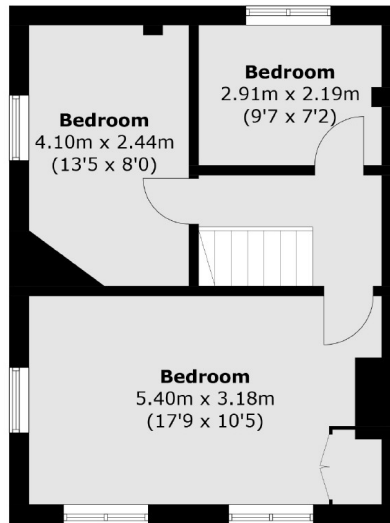
## Twining Avenue, TW2

£599,950

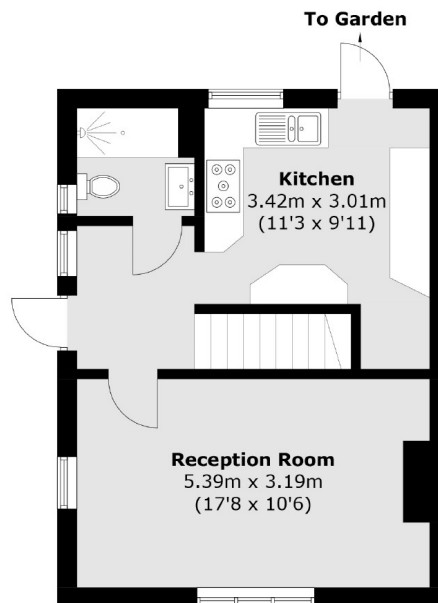
A three bedroom end of terrace family home in this popular residential road. There is a front reception room, large kitchen and a downstairs bathroom with underfloor heating. Upstairs there are three double bedrooms and a large loft room. Further benefits include good sized front and rear gardens, potential to loft and rear extend (STPP) and four off street parking spaces to the front.

Twining Avenue is located off Staines Road, just over a mile from Twickenham town centre with its vast array of bars, shops and mainline station and under offer a mile from Fulwell Station, Waldegrave, Stanley and St James' Schools.

- End of Terrace • Three Bedrooms • Potential to Extend (STPP) •
- Front & Rear Gardens • 4 x Parking Spaces • Close to Station •



## First Floor



## Ground Floor

Total area (approx.): 79.6 sq. m (856.7 sq. ft)

Snellers Twickenham Sales  
64-66 Heath Road  
Twickenham  
TW1 4BX  
020 8892 5555  
twickenhamsales@snellers.co.uk

Energy Rating: D We aim to make our particulars both accurate and reliable. However they are not guaranteed; nor do they form part of an offer or contract. If you require clarification on any points then please contact us, especially if you're traveling some distance to view. Please note that appliances and heating systems have not been tested and therefore no warranties can be given as to their good working order