

SNELLERS

ESTATE AGENTS



Glebe Way, TW13

£625,000

This beautifully presented four bedroom, two bathroom family home really does tick all the boxes. With off-street parking, a South West Facing Garden and plenty of living space, this property is not to be missed.



The ground floor has a welcoming entrance way with space for coats and shoes. The front lounge opens through to the back of the house and has a brilliant sense of space and light and wood flooring throughout. The modern kitchen/diner has large sliding doors which lead onto a sunny and secluded garden. There is a double bedroom and shower room in the middle of the house providing perfect accommodation for guests or an au pair.

The top floor continues to impress with three bedrooms, plenty of storage space and a modern family bathroom. Externally there is a lean to which has been built to provide sheltered storage and provides side access to the garden.

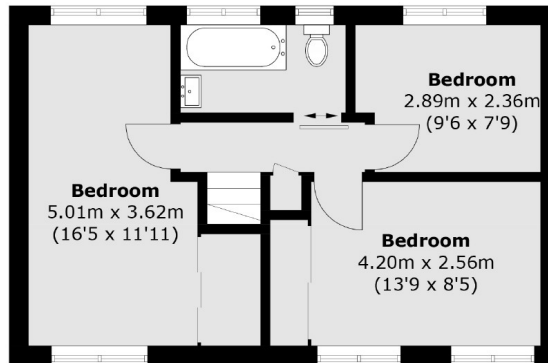
Butts Crescent is accessed off Twickenham Road which offers convenient access to the amenities of both Twickenham and Hampton and David Lloyds Gym which is just across the road. There are plenty of bus routes close to hand and Fulwell Station and Whitton Station both just 1 mile away offering frequent and direct trains into Waterloo.

- Beautifully Presented • Four Bedrooms • Two Bathrooms •
- End Terrace • Off-Street Parking • South-West Facing Garden •

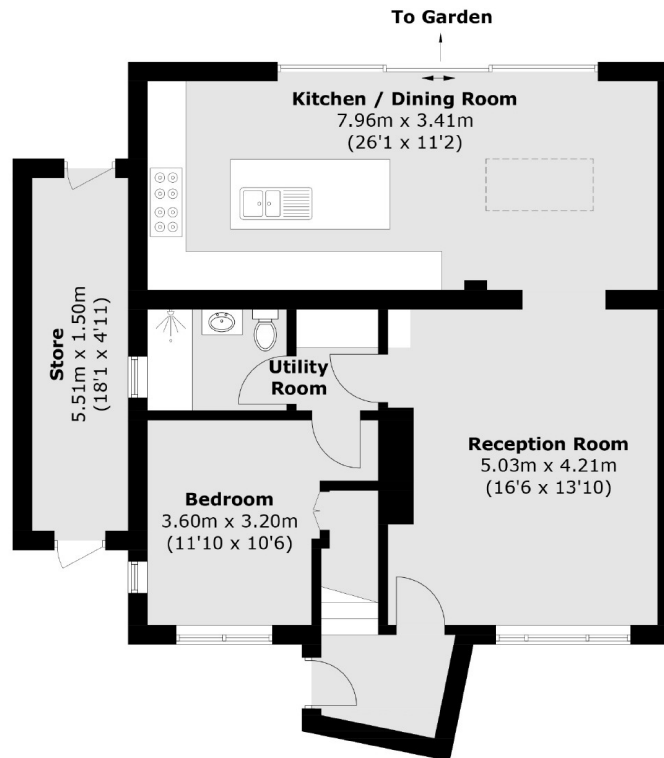


SNELLERS

ESTATE AGENTS



First Floor



Ground Floor

Total area (approx.): 111.6 sq. m (1,201.2 sq. ft)
Store: 8.5 sq. m (91.5 sq. ft)

Snellers Twickenham Sales
64-66 Heath Road
Twickenham
TW1 4BX
020 8892 5555
twickenhamsales@snellers.co.uk

Energy Rating: C We aim to make our particulars both accurate and reliable. However they are not guaranteed; nor do they form part of an offer or contract. If you require clarification on any points then please contact us, especially if you're traveling some distance to view. Please note that appliances and heating systems have not been tested and therefore no warranties can be given as to their good working order