

SNELLERS

ESTATE AGENTS



Popes Grove, TW2

£2,600 PCM

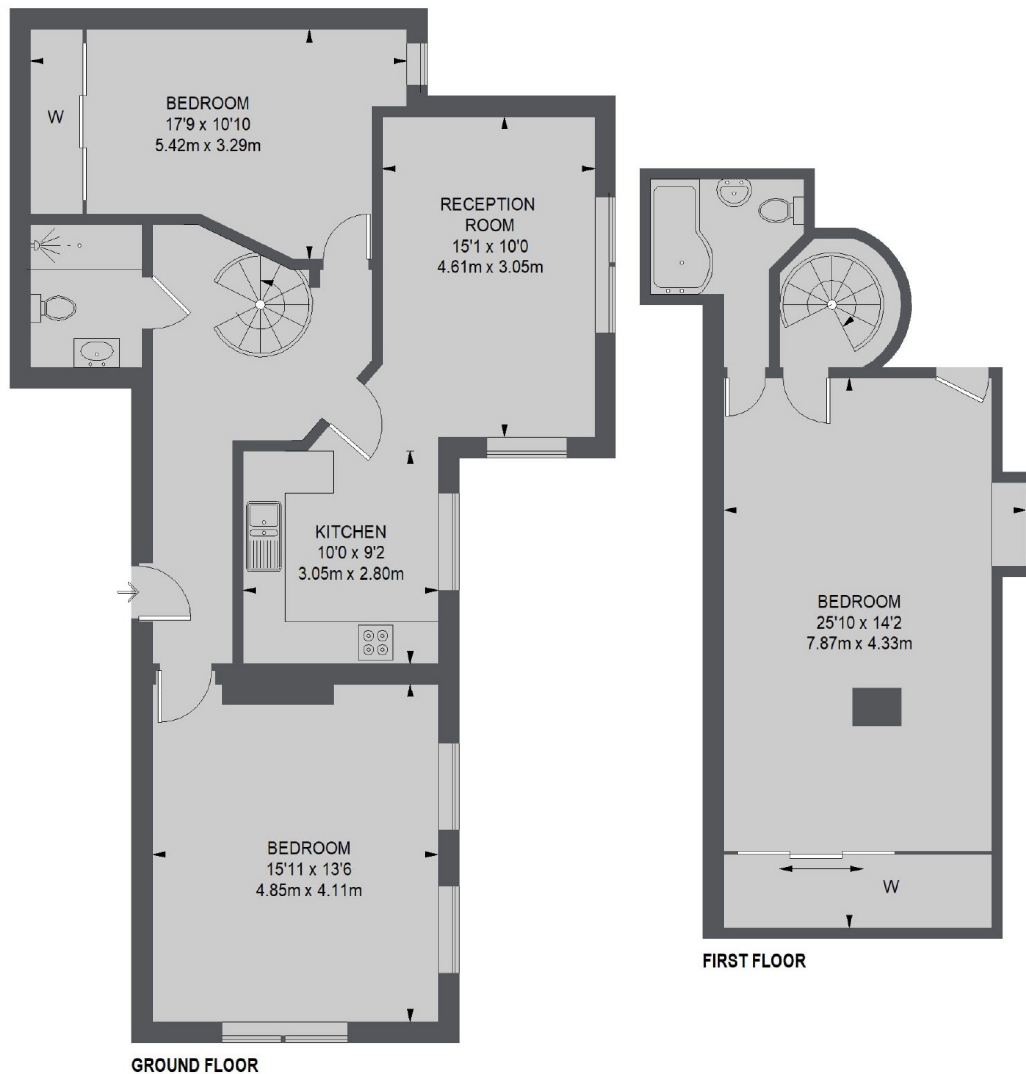
This fantastic split level apartment in the heart of Strawberry Hill offers spacious accommodation with a homely feel throughout. The property is set over the top two floors of this impressive building and offers a large living room, separate dining room leading onto a semi-open plan kitchen, two stunning bathroom suites and three generous sized double bedrooms. The property also offers ample storage within the eaves in the master bedroom.

Popes Grove is a great location with Strawberry Hill train station just 350 metres away and the River Thames and the beautiful greens of Radnor Gardens are a third of a mile away.

- Two Double Bedrooms • Split Level • Two Bathrooms •
- Excellent Location • Private Parking • Impressive Building •

SNELLERS

ESTATE AGENTS



TOTAL APPROX. FLOOR AREA 1230 SQ. FT. (114.28 SQ. M.)

Snellers Twickenham Lettings
64-66 Heath Road
Twickenham
TW1 4BX
020 8892 5678
twickenhamlettings@snellers.co.uk

Energy Rating: E We aim to make our particulars both accurate and reliable. However they are not guaranteed; nor do they form part of an offer or contract. If you require clarification on any points then please contact us, especially if you're traveling some distance to view. Please note that appliances and heating systems have not been tested and therefore no warranties can be given as to their good working order