

# SNELLERS

ESTATE AGENTS



**Devon Avenue, TW2**

**£825,000**

A beautifully presented family home in this popular residential road.



The property has a good sized front reception room, a stunning kitchen dining room with bi-fold doors on to the pretty garden and a downstairs wc. Over the next two floors there are three double bedrooms, a further single bedroom and two bathrooms.

Further benefits include off street parking and a garage.


Devon Avenue is a desirable residential road in the popular 'Counties' development, within close proximity to Twickenham Green and only half a mile from Whitton Station and high street.

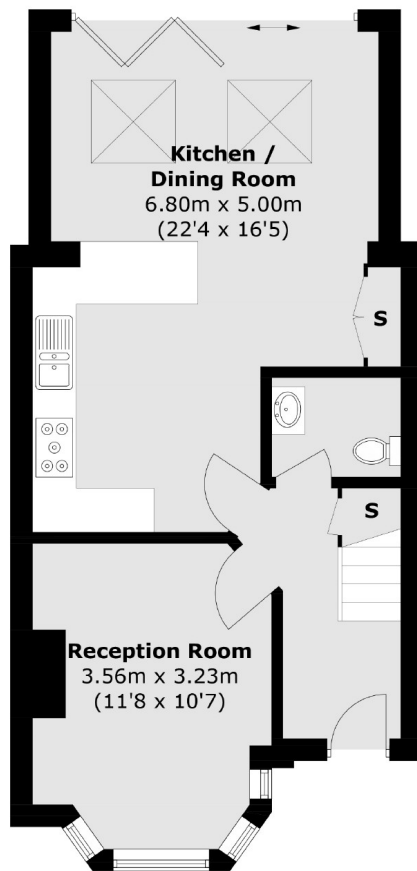
- Modern Finish • Four Bedrooms • Two Bathrooms plus WC •
- Excellent School Catchment • Popular Location • OSP & Garage •



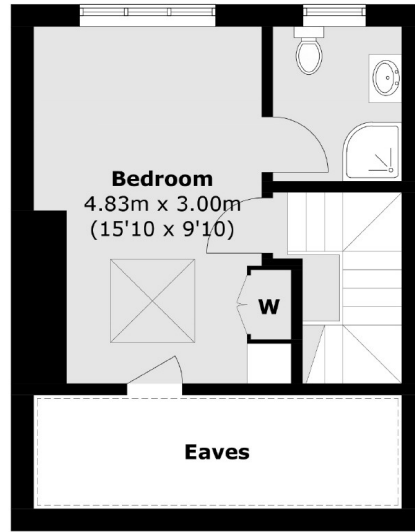
# SNELLERS

ESTATE AGENTS

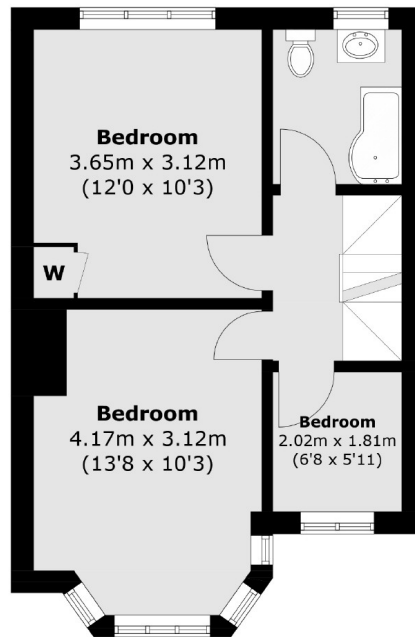
 = Reduced headroom below 1.5m / 5'0



**Ground Floor**



**Second Floor**



**First Floor**

Total area (approx.): 111.3 sq. m (1,197.9 sq. ft)  
(Excluding Eaves)

Snellers Twickenham Sales  
64-66 Heath Road  
Twickenham  
TW1 4BX  
020 8892 5555  
twickenhamsales@snellers.co.uk

Energy Rating: D We aim to make our particulars both accurate and reliable. However they are not guaranteed; nor do they form part of an offer or contract. If you require clarification on any points then please contact us, especially if you're traveling some distance to view. Please note that appliances and heating systems have not been tested and therefore no warranties can be given as to their good working order