

SNELLERS

ESTATE AGENTS



Grove Avenue, TW1

£1,195,000

A beautifully presented five bedroom Victorian family home set on one of Twickenham's most sought after roads.



A beautifully presented five bedroom Victorian family home set on one of Twickenham's most sought after roads.

This charming period family home has been fully rear and loft extended and is beautifully presented throughout.

Downstairs, the property offers a large front reception / dining room and a separate stunning open-plan kitchen / living area with doors onto the pretty rear garden. Upstairs, you'll find three bedrooms and a family bathroom, On the top floor there are two further bedrooms and a family shower room with a walk-in shower.

Further benefits include plenty of storage and a host of original features.

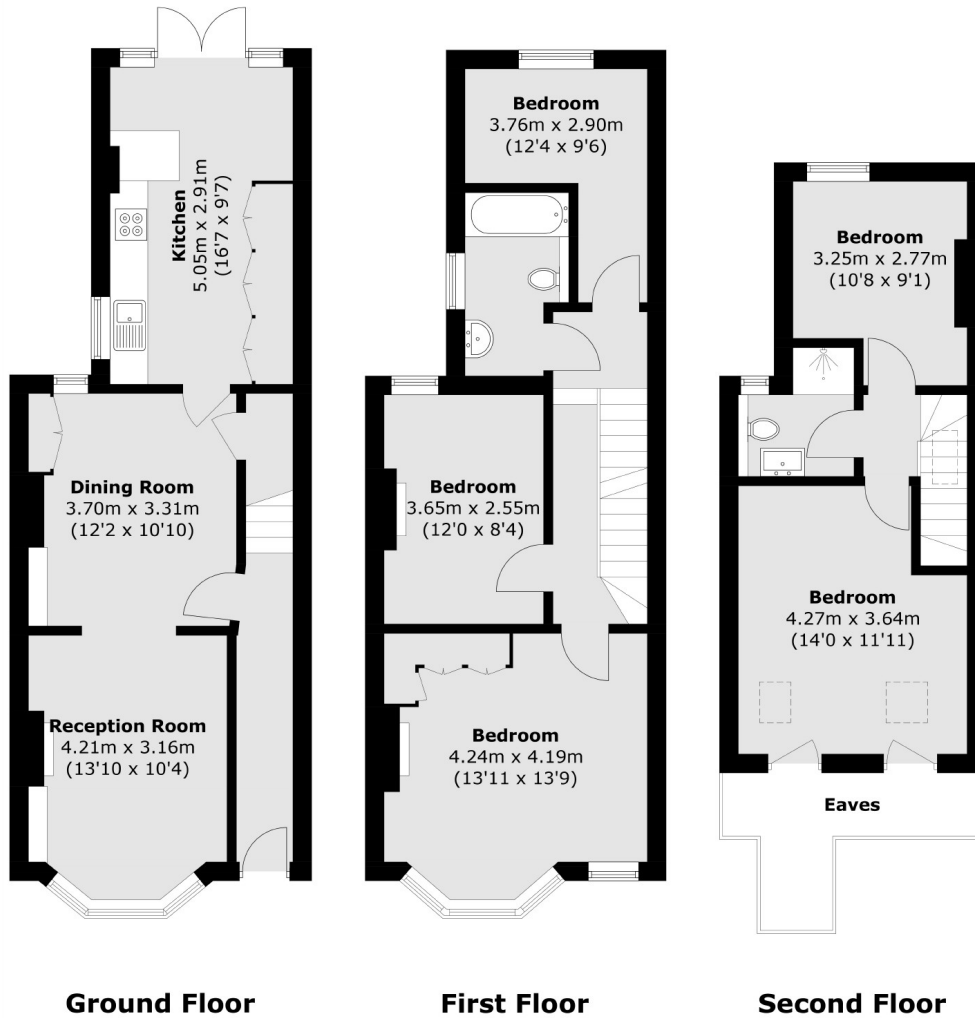
Grove Avenue is a premium road located in the heart of Twickenham where you will find a vast array of shops, pubs and restaurants, offering fantastic transport links and it is in the catchment for outstanding local schools, both private and state-run.

- Five Bedrooms • Two Bath / Shower Rooms • Central Location •
- Modern Finish • Great School Catchment • Good Transport Links •



SNELLERS

ESTATE AGENTS



Total area (approx.): 125.7 sq. m (1,353.0 sq. ft)
(Excluding Eaves)

Snellers Twickenham Sales
64-66 Heath Road
Twickenham
TW1 4BX
020 8892 5555
twickenhamsales@snellers.co.uk

Energy Rating: C We aim to make our particulars both accurate and reliable. However they are not guaranteed; nor do they form part of an offer or contract. If you require clarification on any points then please contact us, especially if you're traveling some distance to view. Please note that appliances and heating systems have not been tested and therefore no warranties can be given as to their good working order