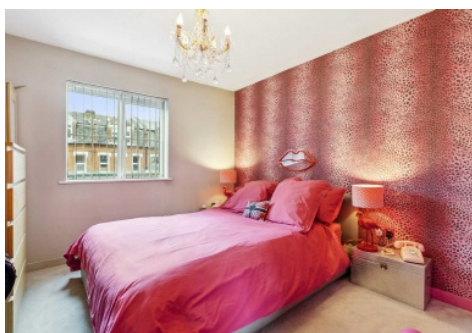
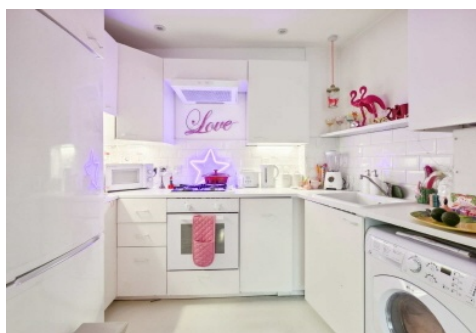


SNELLERS

ESTATE AGENTS



Heath Road, TW1

£339,950

Situated in the heart of Twickenham high street within the borough of Richmond Upon Thames, stands this impressive and recently refurbished one double bedroom apartment.

The property is beautifully presented and benefits from a long lease and modern accommodation throughout, ideal for someone looking to move straight in and enjoy a central high street location.

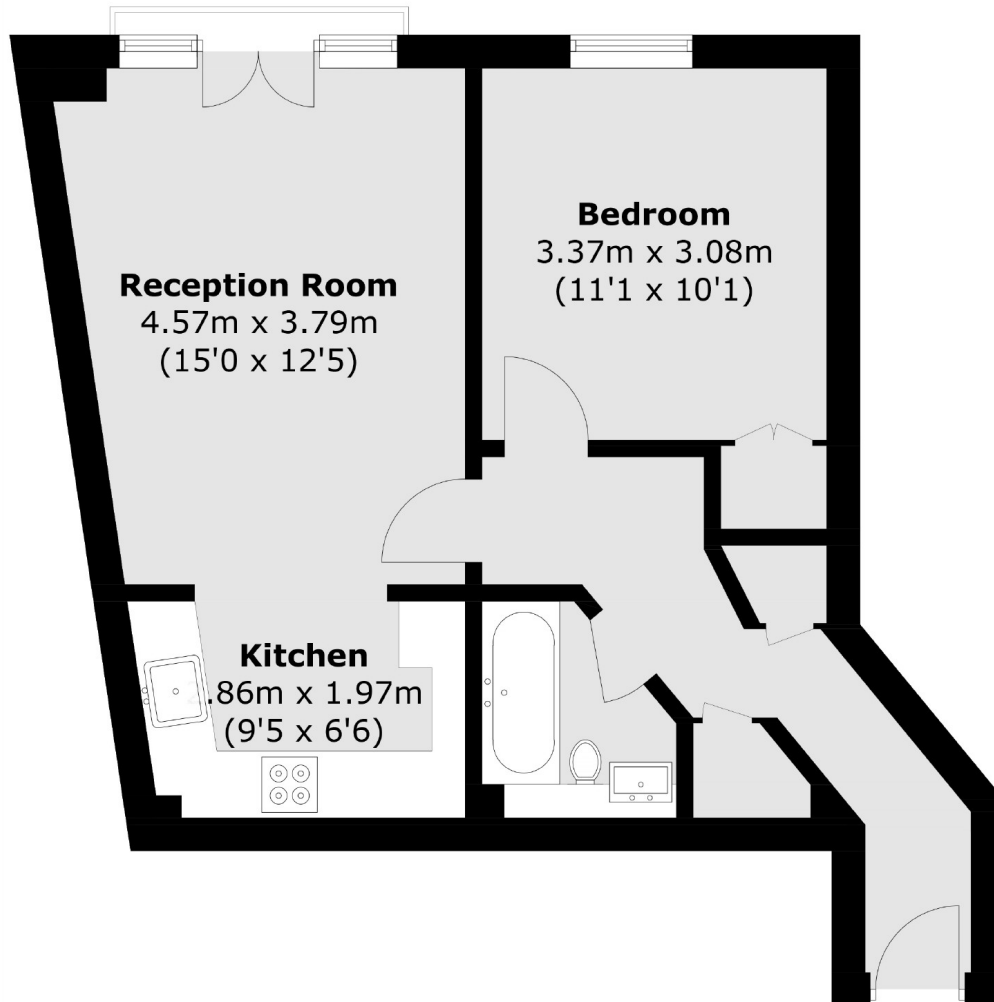
40% of property also available to purchase under shared ownership scheme - see separate listing.

Heath Road is in central Twickenham, within walking distance of Twickenham Green and just 0.5 miles to Twickenham Station, for fast trains into London Waterloo.

- Well Presented • One Double Bedroom • Long Lease •
- Central Location • Over 500 Sq Ft • No Onward Chain •

SNELLERS

ESTATE AGENTS



Total area (approx.): 46.6 sq. m (501.6 sq. ft)

Snellers Twickenham Sales
64-66 Heath Road
Twickenham
TW1 4BX
020 8892 5555
twickenhamsales@snellers.co.uk

Energy Rating: B We aim to make our particulars both accurate and reliable. However they are not guaranteed; nor do they form part of an offer or contract. If you require clarification on any points then please contact us, especially if you're traveling some distance to view. Please note that appliances and heating systems have not been tested and therefore no warranties can be given as to their good working order