



Varsity Drive, TW1

£1,695 PCM

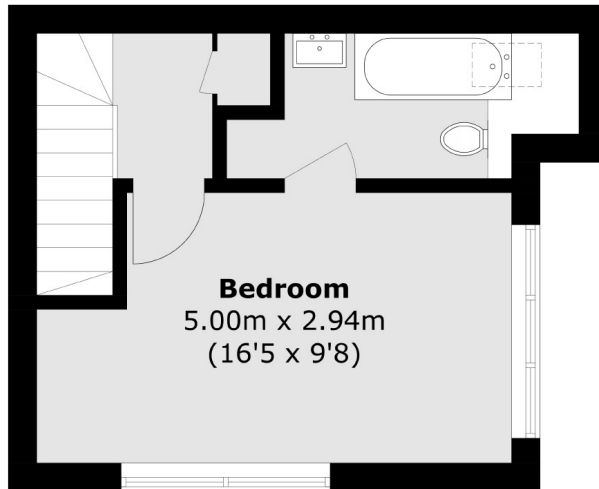
A spacious and rarely available one bedroom house in this popular development in Twickenham. The house has a spacious reception with space for a living and dining area with a modern kitchen off and a WC. Upstairs is a large bedroom and a recently updated bathroom with shower over the bath. Benefits include a private garden, off street parking and neutral decor.

Varsity Drive is a popular residential development less than a mile to Twickenham town centre and mainline station which provides fast and frequent routes to London Waterloo.

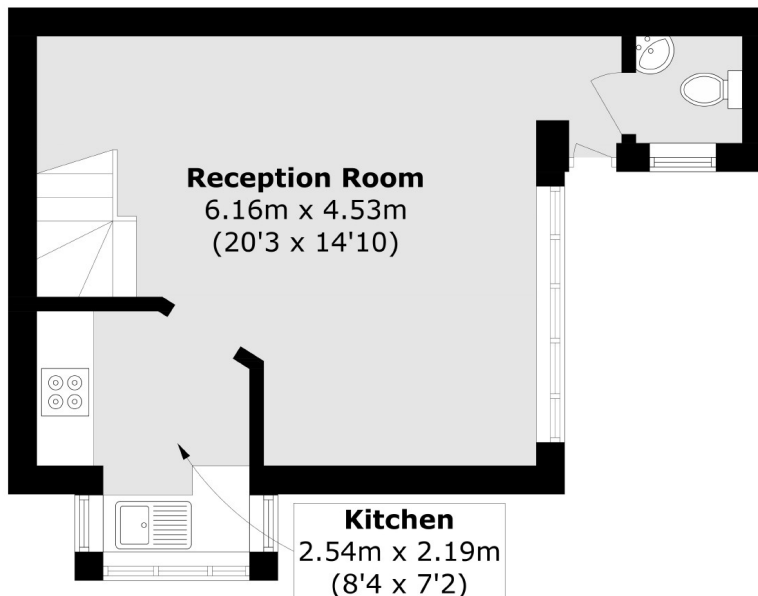
- One Double Bedroom • Spacious Reception Room • Modern Kitchen •
- Private Lawned Garden • Allocated Parking • Neutral Decor •

SNELLERS

ESTATE AGENTS



First Floor



Ground Floor

Total area (approx.): 51.2 sq. m (551.0 sq. ft)

Snellers Twickenham Lettings
64-66 Heath Road
Twickenham
TW1 4BX
020 8892 5678
twickenhamlettings@snellers.co.uk

Energy Rating: E We aim to make our particulars both accurate and reliable. However they are not guaranteed; nor do they form part of an offer or contract. If you require clarification on any points then please contact us, especially if you're traveling some distance to view. Please note that appliances and heating systems have not been tested and therefore no warranties can be given as to their good working order