

SNELLERS

ESTATE AGENTS



Garfield Road, TW1

£475,000

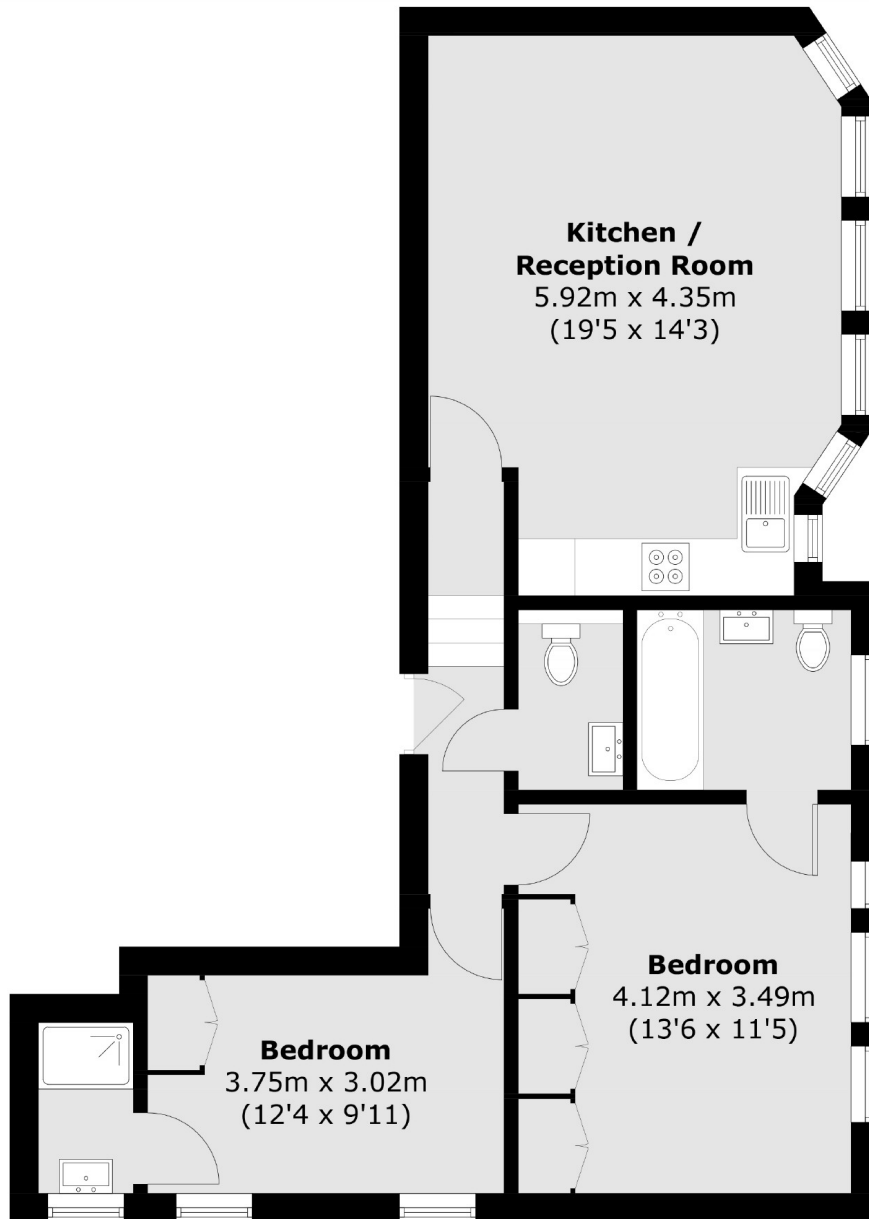
This stylish apartment is set within a well maintained building in the heart of Twickenham. The property has two double bedrooms with two modern bathrooms and a large open-plan kitchen/reception room.

Garfield Road is located in the centre of Twickenham, moments from the mainline train station for fast trains to London Waterloo. With the River Thames and Church Street's restaurants, café's and bars on your doorstep, this would be considered by many as one of the most desirable locations in Twickenham.

- Modern Finish • Two Double Bedrooms • Two Bathrooms •
- Premium Location • No Onward Chain • Second Floor •

SNELLERS

ESTATE AGENTS



Total area (approx.): 61.7 sq. m (664.1 sq. ft)

Snellers Twickenham Sales
64-66 Heath Road
Twickenham
TW1 4BX
020 8892 5555
twickenhamsales@snellers.co.uk

Energy Rating: C We aim to make our particulars both accurate and reliable. However they are not guaranteed; nor do they form part of an offer or contract. If you require clarification on any points then please contact us, especially if you're traveling some distance to view. Please note that appliances and heating systems have not been tested and therefore no warranties can be given as to their good working order