



Strawberry Vale, TW1

£879,950

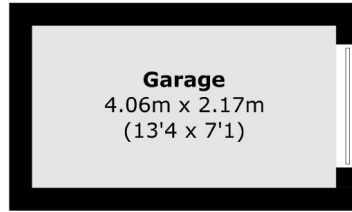
This impressive three bedroom family home benefits from great living space over two floors and includes downstairs W/C, a spacious living room, separate kitchen, family bathroom, master bedroom with en-suite, river views, garage and front and rear gardens.

Strawberry Vale runs adjacent to the River Thames and is close to Teddington and Twickenham town centres, which offer a vast array of shops, bars, restaurants and independent boutiques. Strawberry Hill and Twickenham mainline stations are just half a mile away and provide routes to and from the city. The area is well served for schools, both private and state-run.

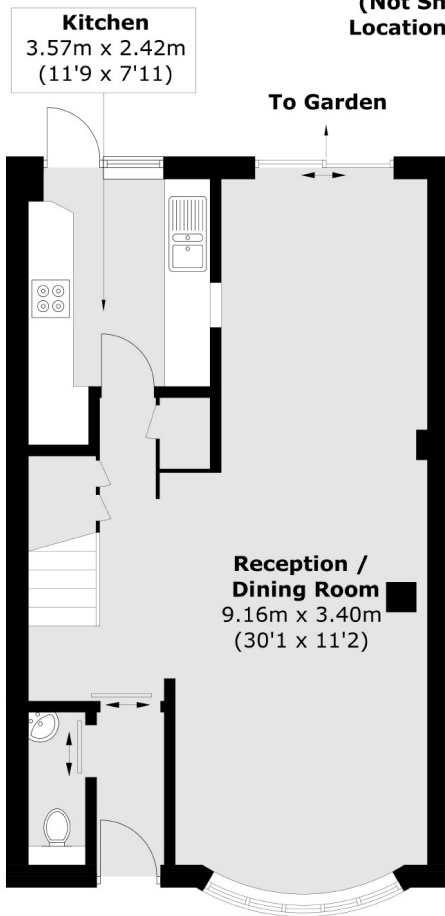
- Three Bedrooms • Excellent Location • Immaculate Condition •
- Garage • Pretty Garden • River & Park Nearby •

SNELLERS

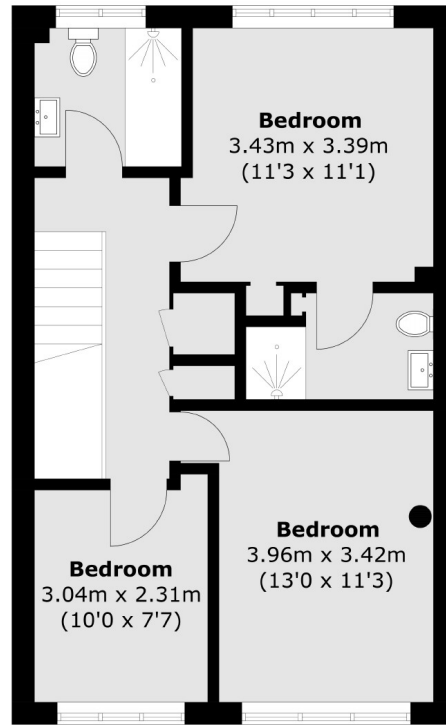
ESTATE AGENTS



(Not Shown In Actual
Location / Orientation)



Ground Floor



First Floor

Total area (approx.): 97.9 sq. m (1,053.8 sq. ft)
Garage area: 8.8 sq. m (94.7 sq. ft)

Snellers Twickenham Sales
64-66 Heath Road
Twickenham
TW1 4BX
020 8892 5555
twickenhamsales@snellers.co.uk

Energy Rating: C We aim to make our particulars both accurate and reliable. However they are not guaranteed; nor do they form part of an offer or contract. If you require clarification on any points then please contact us, especially if you're traveling some distance to view. Please note that appliances and heating systems have not been tested and therefore no warranties can be given as to their good working order