

# SNELLERS

ESTATE AGENTS



## Sherland Road, TW1

£2,995 PCM

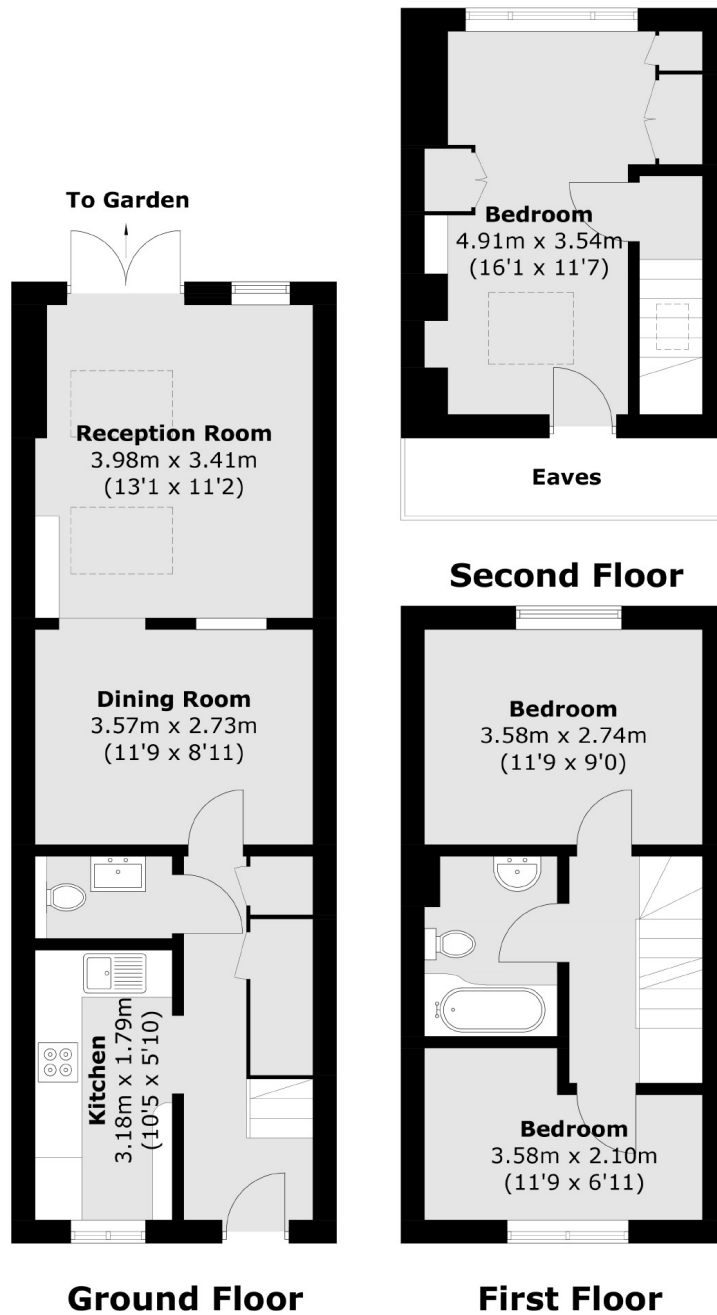
This three bedroom house is close to Twickenham Station with easy access to Twickenham town centre. Downstairs there is a light and airy living room with doors to the rear, modern kitchen and large cloakroom. Upstairs are three double bedrooms and a bathroom.

Sherland Road is a popular road located just behind Twickenham high street where you will find a vast array of shops, pubs and restaurants and the station with fast links into London Waterloo is just a few hundred yards away.

- Victorian Cottage • Mid Terrace • Rear & Loft extended •
- Three Bedrooms • Downstairs WC • Garden •

# SNELLERS

ESTATE AGENTS



Total area (approx.): 86.2 sq. m (927.9 sq. ft)  
(Excluding Eaves)

Snellers Twickenham Lettings  
64-66 Heath Road  
Twickenham  
TW1 4BX  
020 8892 5678  
twickenhamlettings@snellers.co.uk

Energy Rating: We aim to make our particulars both accurate and reliable. However they are not guaranteed; nor do they form part of an offer or contract. If you require clarification on any points then please contact us, especially if you're traveling some distance to view. Please note that appliances and heating systems have not been tested and therefore no warranties can be given as to their good working order