

SNELLERS

ESTATE AGENTS



Godfrey Avenue, TW2

£3,250 PCM

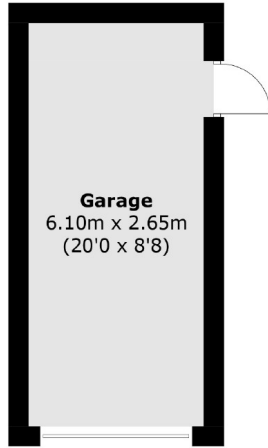
An exceptionally spacious and bright four double bedroom detached family home in a quiet residential road. This property is presented in immaculate condition. The property provides two reception rooms, a separate kitchen, four generous bedrooms, two bathroom, a large rear garden and garage.

Godfrey Avenue is located close to the famous Twickenham Rugby Ground and Twickenham/Whitton mainline Stations with its fast links into London Waterloo.

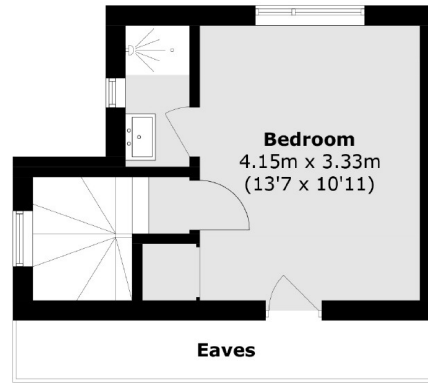
- Garage • Four Bedrooms • Downstairs WC •
- Double Reception Room • Modern Kitchen • Landscaped Garden •

SNELLERS

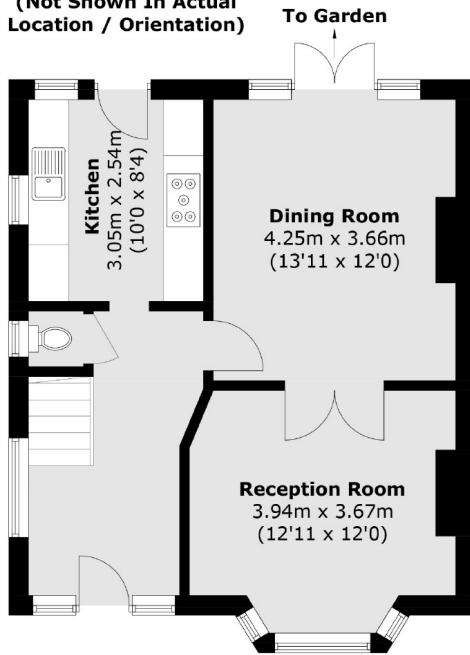
ESTATE AGENTS



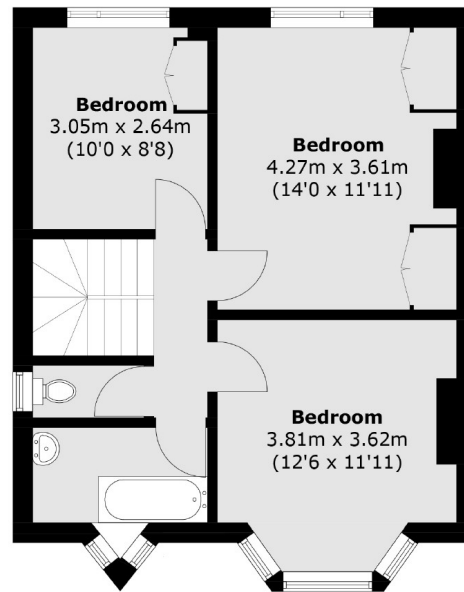
(Not Shown In Actual Location / Orientation)



Second Floor



Ground Floor



First Floor

Total area (approx.): 120.4 sq. m (1296.0 sq. ft)
(Excluding Eaves)

Garage area (approx.): 16.3 sq. m (175.4 sq. ft)

Snellers Twickenham Lettings
64-66 Heath Road
Twickenham
TW1 4BX
020 8892 5678
twickenhamlettings@snellers.co.uk

Energy Rating: We aim to make our particulars both accurate and reliable. However they are not guaranteed; nor do they form part of an offer or contract. If you require clarification on any points then please contact us, especially if you're traveling some distance to view. Please note that appliances and heating systems have not been tested and therefore no warranties can be given as to their good working order