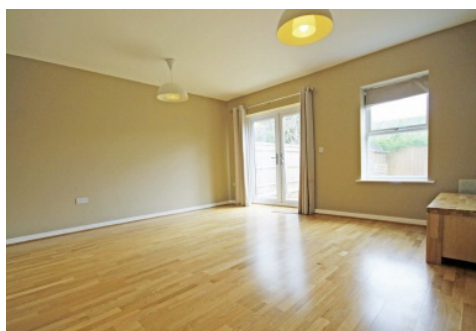


# SNELLERS

ESTATE AGENTS



## Woodbine Close, TW2

£3,100 PCM

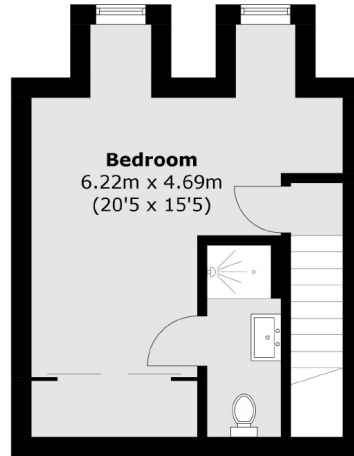
A well presented modern four double bedroom family home. On the ground floor there is a fully fitted contemporary kitchen with dining area, WC and a large living room leading onto a private garden. The first floor has three double bedrooms and a modern family bathroom. The top floor consists of the master double bedroom with an en-suite shower room.

Woodbine Close is a quiet street situated in the catchment area of Twickenham's outstanding schools and a short distance from Twickenham Green. Strawberry Hill station is within walking distance, and the A316 provides quick access into central London and onto the M3.

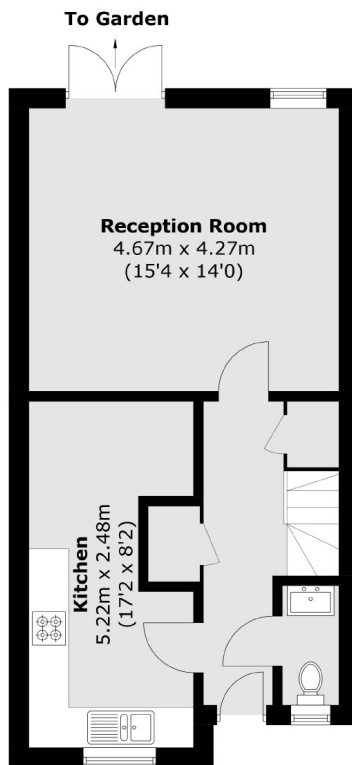
- Four Double Bedrooms • Eat-in Kitchen • Stunning Bathroom •
- Sunny Garden • Off Street Parking • Great School Catchments •

# SNELLERS

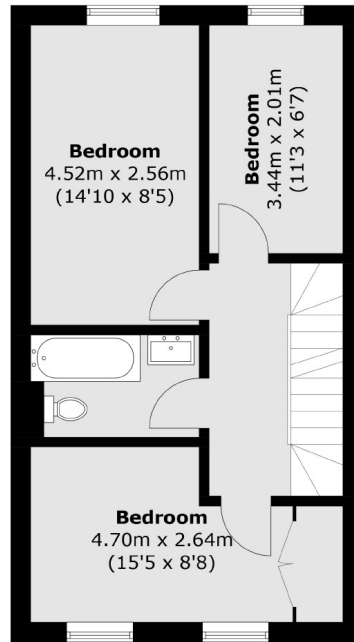
ESTATE AGENTS



**Second Floor**



**Ground Floor**



**First Floor**

Total area (approx.): 112.2 sq. m (1,207.7 sq. ft)

Snellers Twickenham Lettings  
64-66 Heath Road  
Twickenham  
TW1 4BX  
020 8892 5678  
twickenhamlettings@snellers.co.uk

Energy Rating: B We aim to make our particulars both accurate and reliable. However they are not guaranteed; nor do they form part of an offer or contract. If you require clarification on any points then please contact us, especially if you're traveling some distance to view. Please note that appliances and heating systems have not been tested and therefore no warranties can be given as to their good working order