

# SNELLERS

ESTATE AGENTS



## Mill Farm Crescent, TW4

£560,000

This end of terrace three bedroom family home is offered to the market in fantastic condition throughout. The property benefits from a modern kitchen/dining area, separate living room, modern family bathroom and a good sized rear garden.

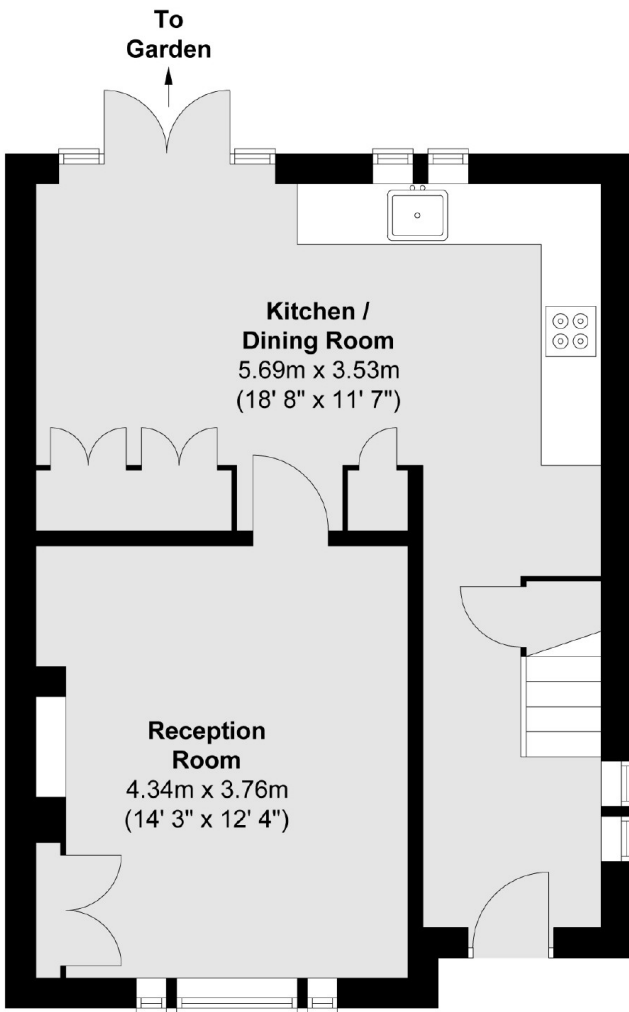
Mill Farm Crescent is within easy reach of the A316, M3 Motorway, local shops as well as Kempton Park, Bushy Park and the River Thames. Mill Farm Crescent is a short walk to local shops and excellent schools are also close by.

- End Of Terrace • Great Condition • Three Bedrooms •
- Popular Location • Large Garden • Outstanding School Catchment •

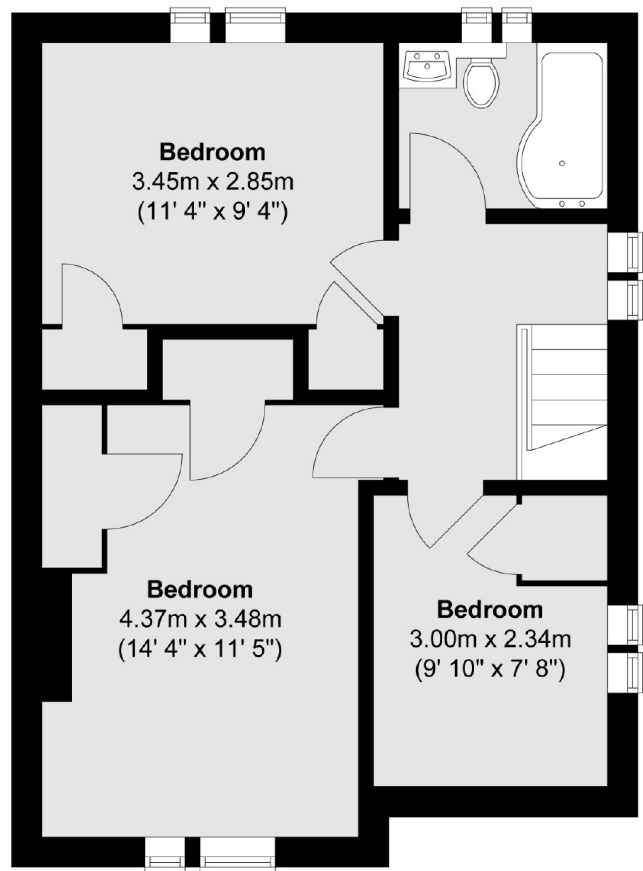
# SNELLERS

ESTATE AGENTS

## Ground Floor



## First Floor



Total area (approx.) : 90.1 sq. m (970 sq. ft)

Snellers Twickenham Sales  
64-66 Heath Road  
Twickenham  
TW1 4BX  
020 8892 5555  
twickenhamsales@snellers.co.uk

Energy Rating: C We aim to make our particulars both accurate and reliable. However they are not guaranteed; nor do they form part of an offer or contract. If you require clarification on any points then please contact us, especially if you're traveling some distance to view. Please note that appliances and heating systems have not been tested and therefore no warranties can be given as to their good working order