

SNELLERS

ESTATE AGENTS



Manor Road, TW2

£1,650 PCM

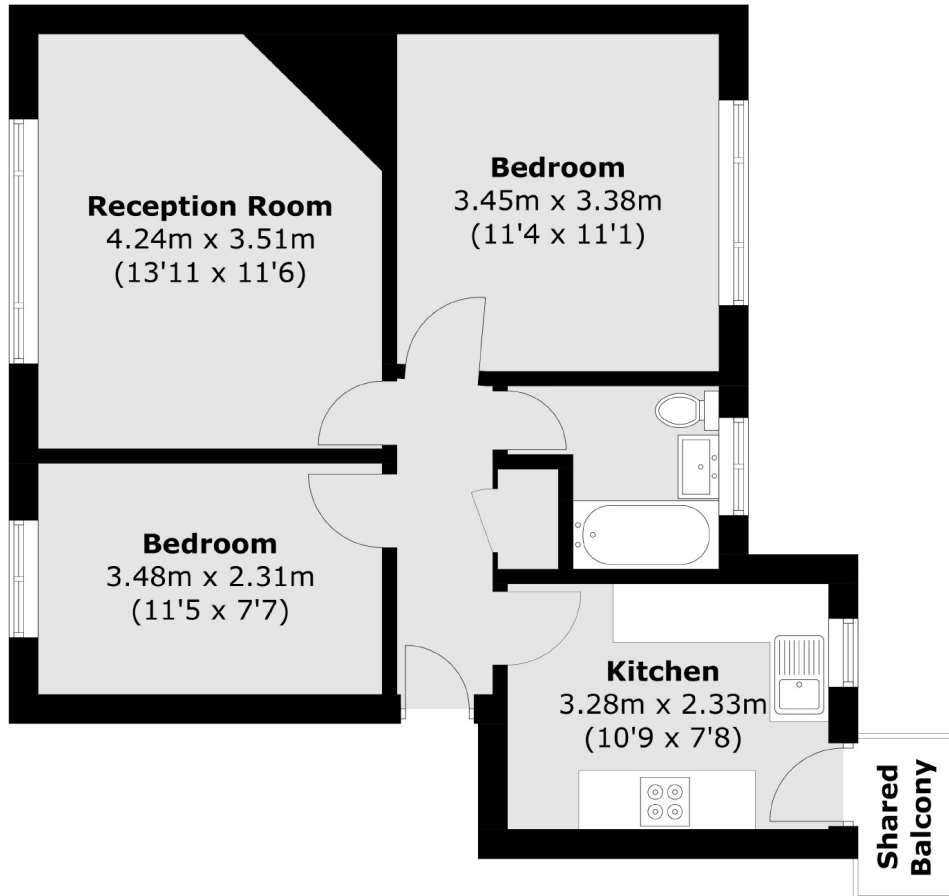
This two double bedroom top floor apartment is in a popular development close to Twickenham Green. The property has a spacious living room, modern bathroom and a separate kitchen. The development also offers unallocated parking and well maintained communal gardens.

Manor Court is set on Manor Court, a short walk from the river Crane. Twickenham Green is within walking distance, and both Whitton and Strawberry Hill stations are within 1 mile.

- Two Bedrooms • Separate Kitchen • Close to Twickenham Green •
- Unallocated Parking • Communal Gardens • Top Floor •

SNELLERS

ESTATE AGENTS



Total area (approx.): 52.9 sq. m (569.4 sq. ft)
Shared Balcony area (approx.): 1.6 sq. m (17.2 sq. ft)

Snellers Twickenham Lettings
64-66 Heath Road
Twickenham
TW1 4BX
020 8892 5678
twickenhamlettings@snellers.co.uk

Energy Rating: C We aim to make our particulars both accurate and reliable. However they are not guaranteed; nor do they form part of an offer or contract. If you require clarification on any points then please contact us, especially if you're traveling some distance to view. Please note that appliances and heating systems have not been tested and therefore no warranties can be given as to their good working order