

SNELLERS

ESTATE AGENTS



Queens Road, TW1

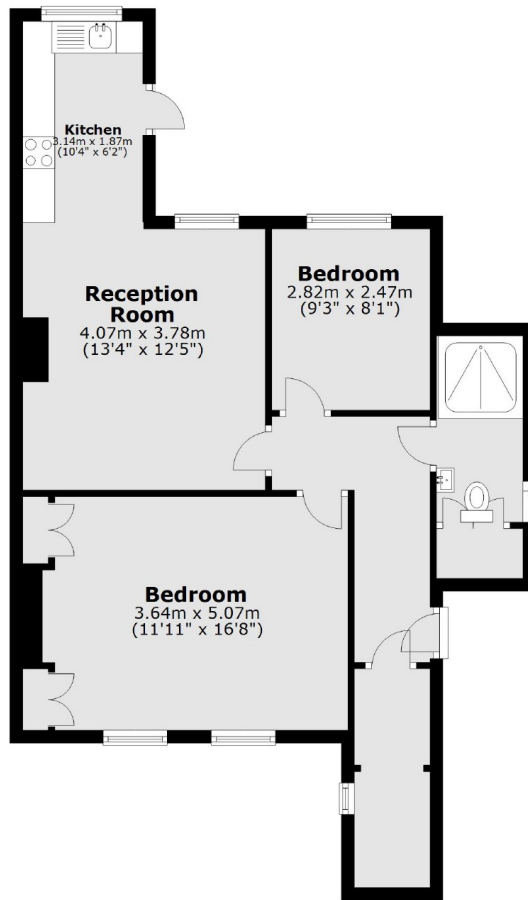
£475,000

A charming lower ground floor Victorian flat ideally positioned in central Twickenham. The accommodation is well presented throughout and consists of a large reception room onto a modern kitchen, two bedrooms, bathroom, lots of storage space, and a good sized pretty garden. This property is ideal for those looking for an incredibly central location close to both the high street and station.

Queens Road is a tree lined road close to the high street and just a few hundred yards to Twickenham station, for fast trains into Waterloo.

- Lower Ground Floor • Well Presented • Two Bedrooms •
- Private Garden • Ample Storage • Central Location •

Ground Floor



Total area: approx. 64.0 sq. metres (689.1 sq. feet)

Snellers Twickenham Sales
64-66 Heath Road
Twickenham
TW1 4BX
020 8892 5555
twickenhamsales@snellers.co.uk

Energy Rating: D We aim to make our particulars both accurate and reliable. However they are not guaranteed; nor do they form part of an offer or contract. If you require clarification on any points then please contact us, especially if you're traveling some distance to view. Please note that appliances and heating systems have not been tested and therefore no warranties can be given as to their good working order