

SNELLERS

ESTATE AGENTS



Fourth Cross Road, TW2

£900,000

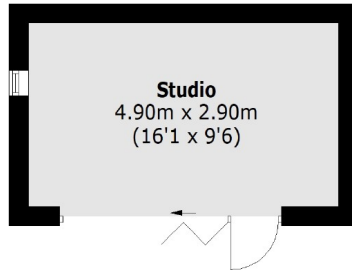
This large three double bedroom end of terrace house has recently been loft extended and could be further extended to the rear (STPP). A wonderful family home which benefit's from side access and a studio/office at the end of the large west facing garden.

Fourth Cross Road is within half a mile to both Waldegrave School and Twickenham Green with local shops, pubs and restaurants. The high street is within easy access with various transport links at hand.

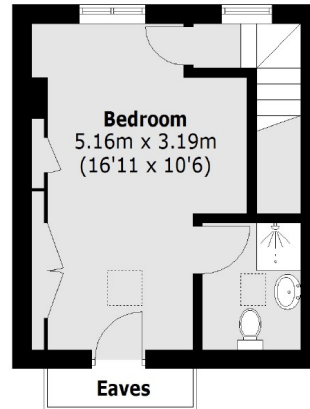
- Victorian • Three Bedrooms • Large West Facing Garden •
- Studio/Office • Access To Outstanding Schools • End of Terrace •

SNELLERS

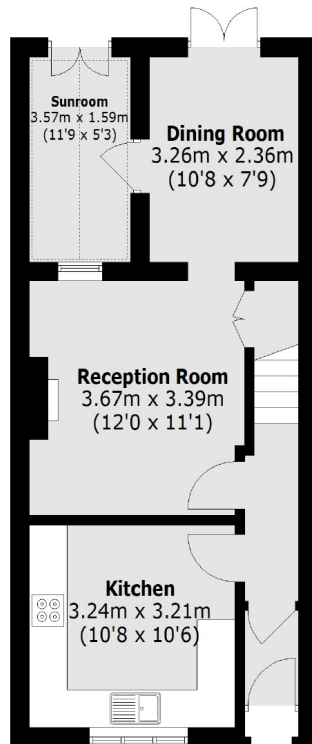
ESTATE AGENTS



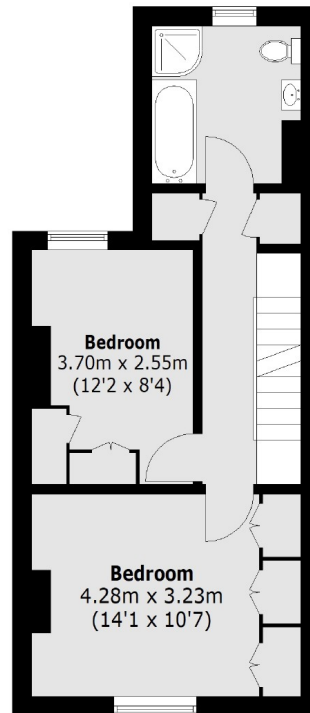
(Not Shown In Actual
Location / Orientation)



Second Floor



Ground Floor



First Floor

Total area (approx.): 105.3 sq. m (1,133.3 sq. ft)
(Excluding Eaves)

Studio: 14.7 sq. m (158.2 sq. ft)

Snellers Twickenham Sales
64-66 Heath Road
Twickenham
TW1 4BX
020 8892 5555
twickenhamsales@snellers.co.uk

Energy Rating: D We aim to make our particulars both accurate and reliable. However they are not guaranteed; nor do they form part of an offer or contract. If you require clarification on any points then please contact us, especially if you're traveling some distance to view. Please note that appliances and heating systems have not been tested and therefore no warranties can be given as to their good working order