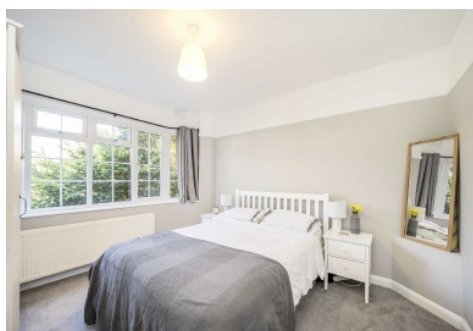


# SNELLERS

ESTATE AGENTS



## Kneller Road, TW2

£395,000

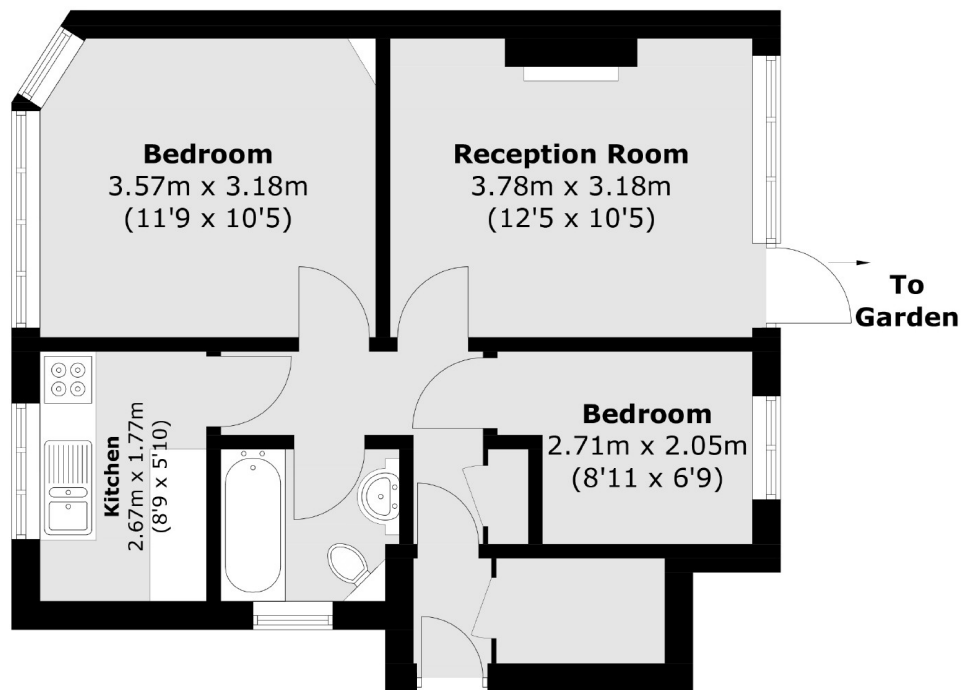
A charming and well presented ground floor maisonette situated on a quiet residential road close to Whitton and Twickenham. Offering two bedrooms, separate kitchen and a living room with doors onto a lovely private south-facing garden that has been newly landscaped.

Kneller Road enjoys close proximity to several parks, including Murray Park less than 400ft away, as well as some great schools. Commuters benefit from easy access to Whitton Station for direct trains into London Waterloo in under half an hour.

- Well Presented • Ground Floor • Front & Rear Gardens •
- Two Bedrooms • Leasehold • Convenient Location •

# SNELLERS

ESTATE AGENTS



Total area (approx.): 46.6 sq. m (501.6 sq. ft)

Snellers Twickenham Sales  
64-66 Heath Road  
Twickenham  
TW1 4BX  
020 8892 5555  
twickenhamsales@snellers.co.uk

Energy Rating: C We aim to make our particulars both accurate and reliable. However they are not guaranteed; nor do they form part of an offer or contract. If you require clarification on any points then please contact us, especially if you're traveling some distance to view. Please note that appliances and heating systems have not been tested and therefore no warranties can be given as to their good working order