

SNELLERS

ESTATE AGENTS



Beauchamp Road, TW1

£750,000

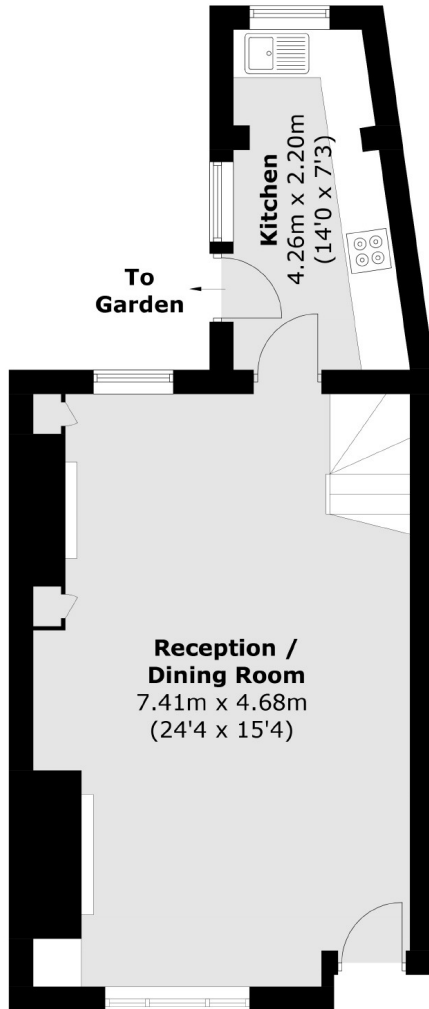
A rare opportunity to purchase this pretty Victorian end of terrace cottage offering a front courtyard garden, two double bedrooms, a large through reception and kitchen leading to a rear garden. Further benefits include a garage, original features and potential to extend (STPP).

Beauchamp Road is situated less than a quarter of a mile to Twickenham Station and St Mary's Primary School. Orleans Park School, the River Thames and St Margarets Village are all less than half a mile away.

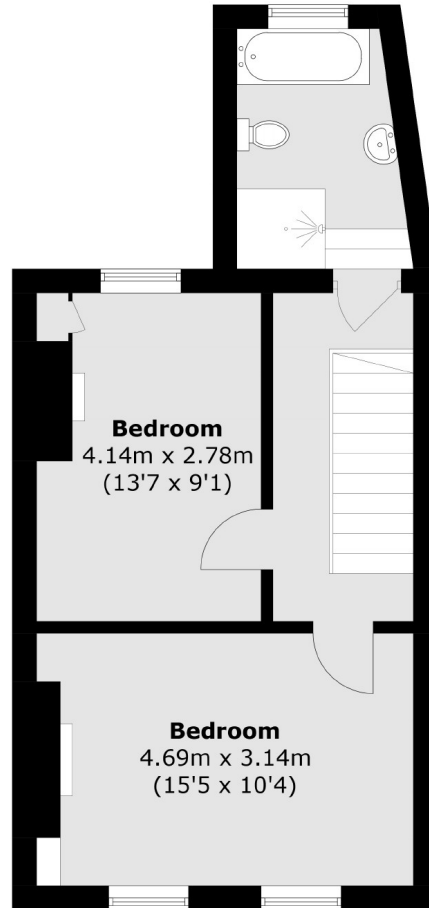
- Victorian Cottage • Two Bedrooms • End Of Terrace •
- Prime Location • Garage • Potential To Extend STPP •

SNELLERS

ESTATE AGENTS



Ground Floor



First Floor

Total area (approx.): 84.7 sq. m (911.7 sq. ft)

Snellers Twickenham Sales
64-66 Heath Road
Twickenham
TW1 4BX
020 8892 5555
twickenhamsales@snellers.co.uk

Energy Rating: TBC We aim to make our particulars both accurate and reliable. However they are not guaranteed; nor do they form part of an offer or contract. If you require clarification on any points then please contact us, especially if you're traveling some distance to view. Please note that appliances and heating systems have not been tested and therefore no warranties can be given as to their good working order