

SNELLERS

ESTATE AGENTS



Mallard Place, TW1

£929,500

A beautiful townhouse set in the award winning riverside development by renowned architects Geoffrey Townsend and Eric Lyons.



This beautiful modernised three bedroom townhouse is offered to the market with no onward chain and benefits from an open plan living area, a newly fitted kitchen, en-suite master bedroom, a private lawned garden with rear access and a private garage.

Further benefits include stunning communal gardens overlooking the river and a residents outdoor heated swimming pool.

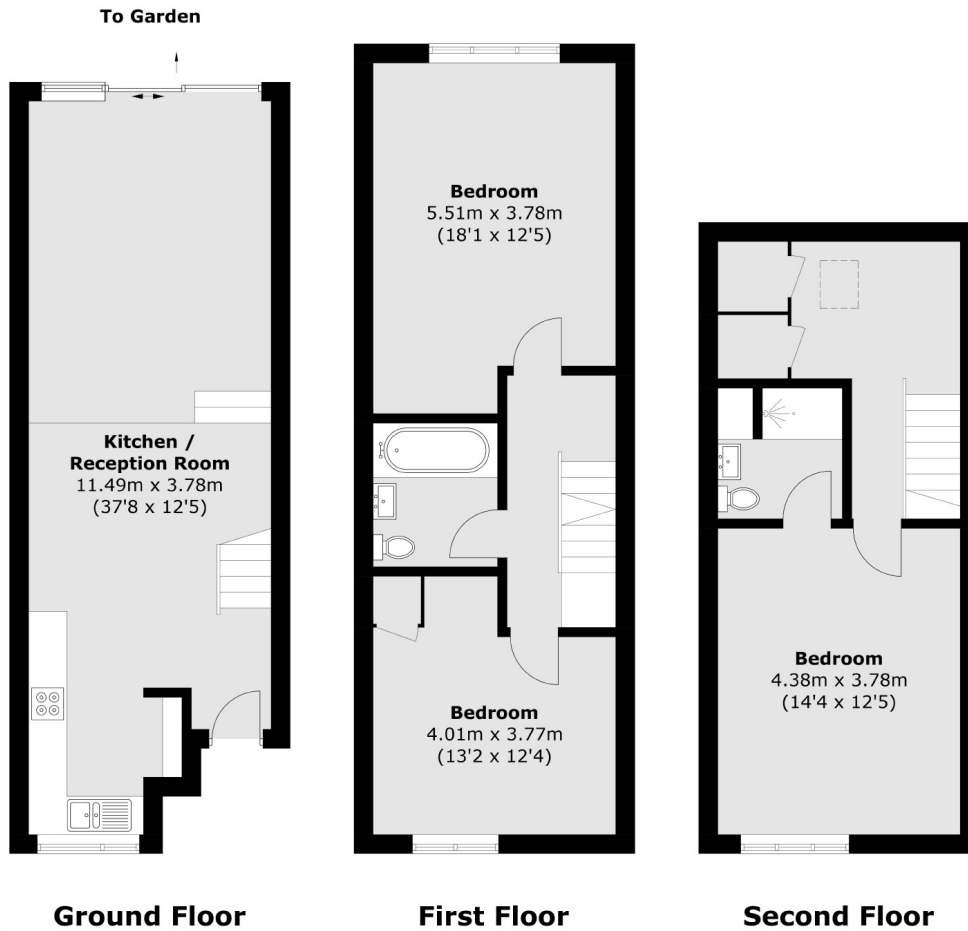
Situated within this award winning riverside development, Mallard Place is a popular location which is both idyllic and easily accessible to Strawberry Hill, Twickenham and Teddington mainline stations. The property is also within fantastic school catchment and close to many local parks.

- Townhouse • Riverside Development • Three Bedrooms •
- Garage • Modern Finish • No Onward Chain •



SNELLERS

ESTATE AGENTS



Total area (approx.): 122.6 sq. m (1,319.6 sq. ft)

Snellers Twickenham Sales
64-66 Heath Road
Twickenham
TW1 4BX
020 8892 5555
twickenhamsales@snellers.co.uk

Energy Rating: C We aim to make our particulars both accurate and reliable. However they are not guaranteed; nor do they form part of an offer or contract. If you require clarification on any points then please contact us, especially if you're traveling some distance to view. Please note that appliances and heating systems have not been tested and therefore no warranties can be given as to their good working order