

SNELLERS

ESTATE AGENTS



Sherland Road, TW1

£795,000

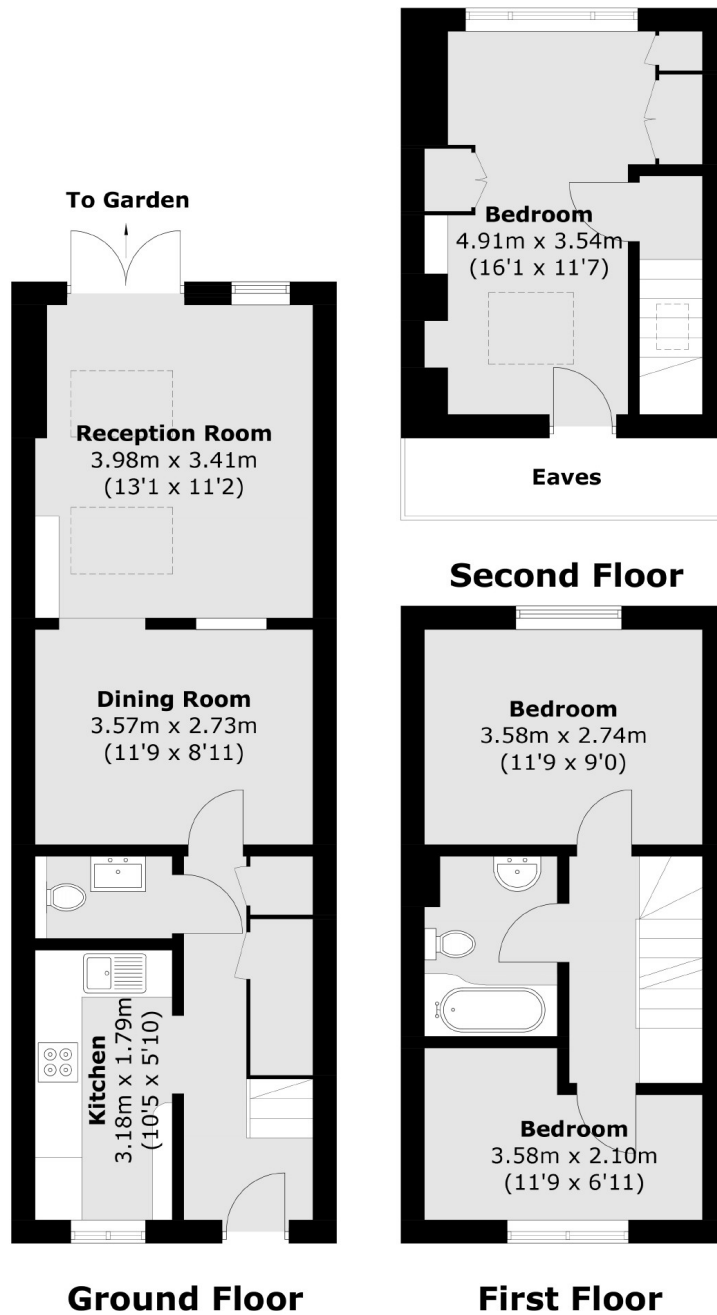
This Victorian mid-terrace cottage is perfect for those seeking convenient access into the high street and central London. Fully extended at the rear, it offers an airy open-plan living/dining area alongside a separate kitchen. The ground floor also includes a wc for added convenience. Upstairs, you'll find two spacious double bedrooms, a versatile third bedroom that doubles as an office space, and a family bathroom.

Sherland Road is a popular road located just behind Twickenham high street where you will find a vast array of shops, pubs and restaurants and the station with fast links into London Waterloo is just a few hundred yards away.

- Victorian Cottage • Mid-terrace • Rear and Loft extended •
- Three Bedrooms • Downstairs WC • Rear Garden •

SNELLERS

ESTATE AGENTS



Total area (approx.): 86.2 sq. m (927.9 sq. ft)
(Excluding Eaves)

Snellers Twickenham Sales
64-66 Heath Road
Twickenham
TW1 4BX
020 8892 5555
twickenhamsales@snellers.co.uk

Energy Rating: TBC We aim to make our particulars both accurate and reliable. However they are not guaranteed; nor do they form part of an offer or contract. If you require clarification on any points then please contact us, especially if you're traveling some distance to view. Please note that appliances and heating systems have not been tested and therefore no warranties can be given as to their good working order