

SNELLERS

ESTATE AGENTS



Elmsleigh Road, TW2

£399,950

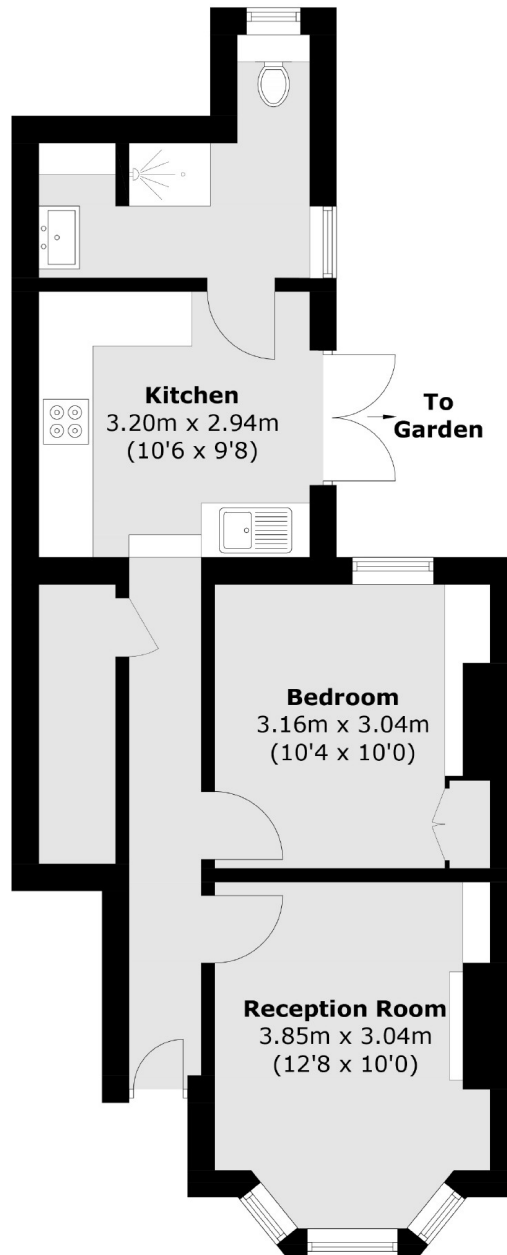
This stunning ground floor period garden maisonette is well presented throughout and is being sold with no onward chain. This property benefits from a separate reception room with high ceilings and period features, large double bedroom, modern shower room and kitchen leading onto a private rear garden. There is further potential to side/rear extend STPP.

Elmsleigh Road is a quiet residential cul-de-sac located off Staines Road, ideally positioned for excellent schools, with Waldegrave Girls, Trafalgar and Archdeacon close by.

- Period Conversion • Leasehold • Private Rear Garden •
- One Double Bedroom • No Onward Chain • Potential to Extend STPP •

SNELLERS

ESTATE AGENTS



Total area (approx.): 45.2 sq. m (486.5 sq. ft)

Snellers Twickenham Sales
64-66 Heath Road
Twickenham
TW1 4BX
020 8892 5555
twickenhamsales@snellers.co.uk

Energy Rating: C We aim to make our particulars both accurate and reliable. However they are not guaranteed; nor do they form part of an offer or contract. If you require clarification on any points then please contact us, especially if you're traveling some distance to view. Please note that appliances and heating systems have not been tested and therefore no warranties can be given as to their good working order