

# SNELLERS

ESTATE AGENTS



## Prospect Crescent, TW2

£424,950

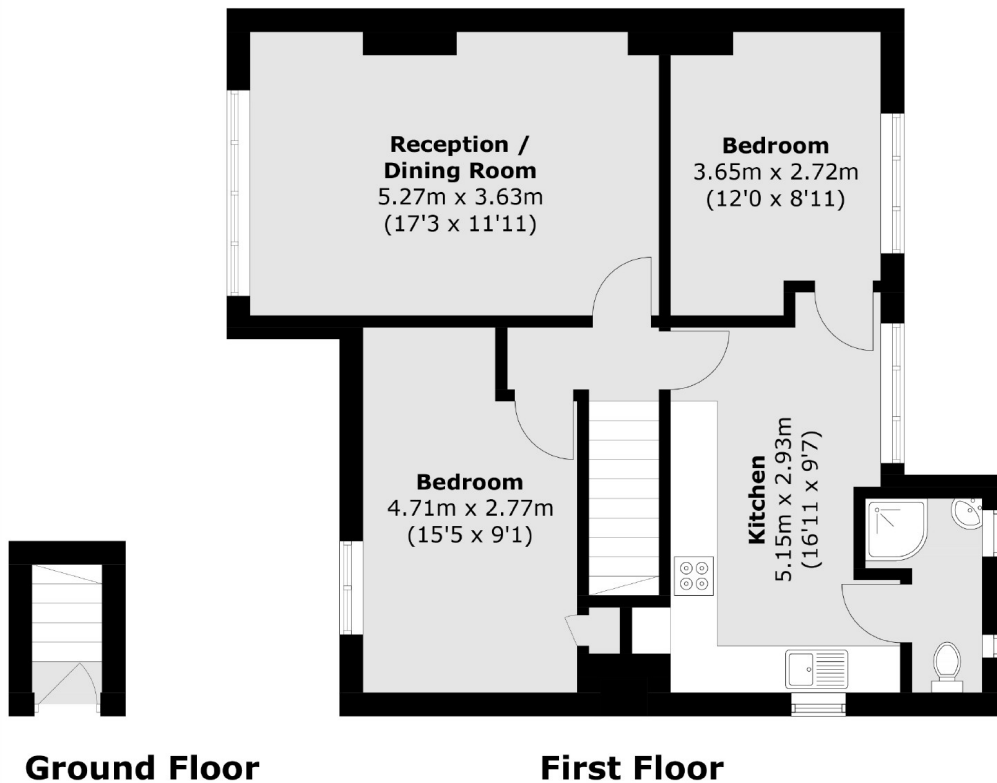
This two double bedroom first floor garden flat is offered to the market with a modern kitchen, good sized reception/dining room and a newly renovated bathroom. Further benefits to the property include double glazed windows, gas central heating and a large private rear garden.

Prospect Crescent is a quiet residential street with plenty of on street parking, perfectly located moments from Whitton High Street, Whitton Station and local bus routes and is within the catchment areas for many very highly rated Richmond Borough schools.

- Two Double Bedrooms • First Floor Apartment • Modern Finish •
- Large Garden • Central Location • Outstanding School Catchment •

# SNELLERS

ESTATE AGENTS



Total area (approx.): 66.1 sq. m (711.5 sq. ft)

Snellers Twickenham Sales  
64-66 Heath Road  
Twickenham  
TW1 4BX  
020 8892 5555  
twickenhamsales@snellers.co.uk

Energy Rating: C We aim to make our particulars both accurate and reliable. However they are not guaranteed; nor do they form part of an offer or contract. If you require clarification on any points then please contact us, especially if you're traveling some distance to view. Please note that appliances and heating systems have not been tested and therefore no warranties can be given as to their good working order